

Bassin Park Road, Wendell Park, W12

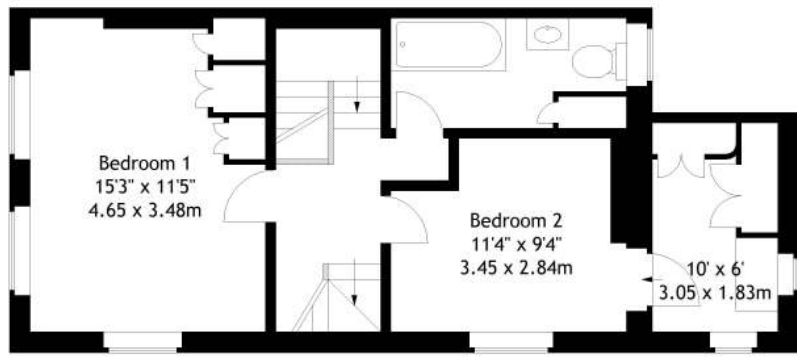
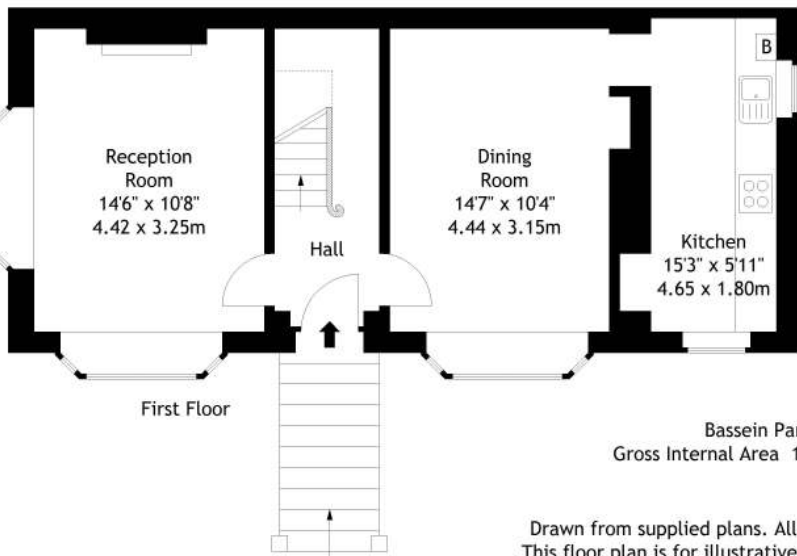
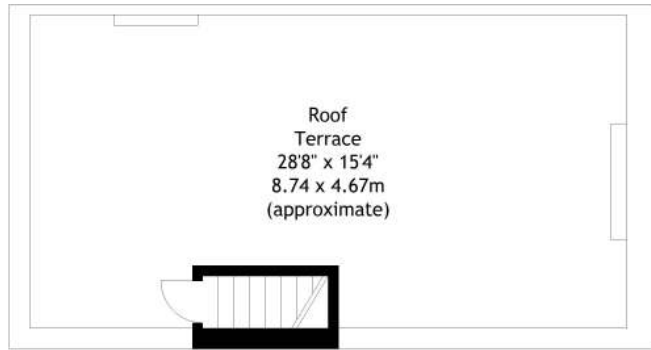
Flat | 3 bedrooms | Wendell Park

For Sale £700,000 sh of fh

**horton
andgarton**



horton and garton



Bassein Park Road, W12
Gross Internal Area 1028 sq ft - 95.50 sq m



Drawn from supplied plans. All measurements are approximate.
This floor plan is for illustrative purposes only and is not to scale.
© Horton and Garton Estate Agents 2019



Three bedroom flat | 1033 Sq' - 96 SqM | Large roof terrace | Private front door | EPC rating E | Wendell Park

Our membership of the Association of Residential Letting Agents (ARLA), National Association of Estate Agents (NAEA), the National Federation of Property Professionals (NFOPP), and the Property Ombudsman Scheme - Sales and Lettings, act as a guarantee to our customers of our rigorous standards.



horton and garton