

FOR SALE

Manor Court Manor Gardens,
Gunnersbury, W3

Flat
West London

£350,000 lh

2  1  1 

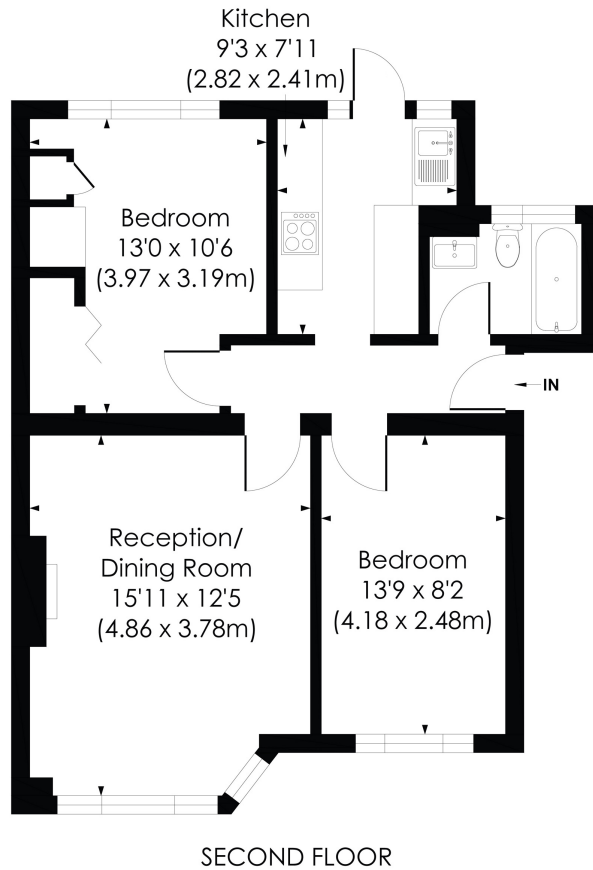


**horton
andgarton**

SALES / LETTINGS / PROPERTY MANAGEMENT

hortonandgarton.co.uk | Sales 020 3989 6464 | Lettings 020 3989 5454
161 Chiswick High Road, London, W4 2DT





MANOR GARDENS, W3

Approx. Gross Internal Floor Area
611 Sq' / 56.78 SqM (Including Eaves)

**horton
andgarton**

© Pixangle Property Marketing Ltd. info@pixangle.com Tel: 0208 870 2118

This floor plan has been prepared for the purpose of illustration only in accordance with the latest RICS code of measuring practice and is not to scale. All measurements and areas are approximate and whilst every effort has been made to ensure the accuracy of the plan contained here, no responsibility is taken for any error, omission or misstatement.



Private gated development | Two bedroom apartment |
611 Sq' - 56.78 SqM | Dedicated parking space | EPC
rating C | Gunnersbury



hortonandgarton.co.uk
Sales 020 3989 6464
Lettings 020 3989 5454

161 Chiswick High Road, London, W4 2DT