

# FOR SALE

---

Beavor Grove,  
St Peter's Conservation Area, W6

---

Terraced House

3 bedrooms

St Peter's Conservation Area

---

£1,000,000 fh

---

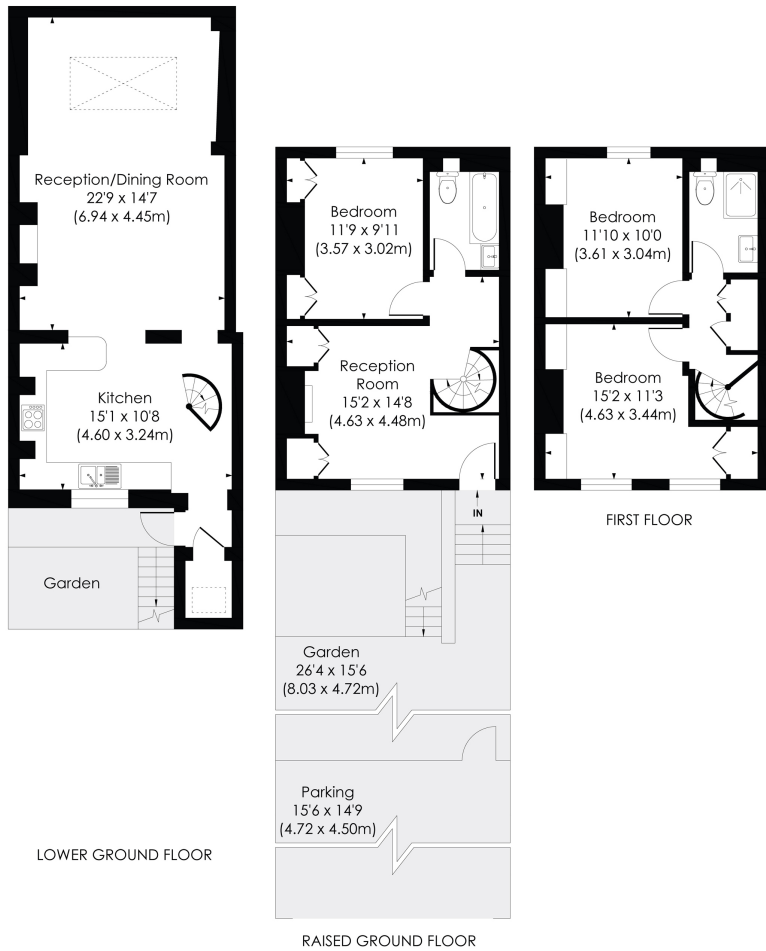


**horton  
andgarton**

SALES / LETTINGS / PROPERTY MANAGEMENT

hortonandgarton.co.uk | Sales 020 8819 0510 | Lettings 020 8819 0511  
172 King Street, Hammersmith, W6 0QU





**BEAVOR GROVE, W6**

Approx. Gross Internal Floor Area

**1243 Sq' / 115.45 SqM**

**horton  
andgarton**

© Pixangle Property Marketing Ltd. info@pixangle.com Tel: 0208 870 2118

This floor plan has been prepared for the purpose of illustration only in accordance with the latest RICS code of measuring practice and is not to scale. All measurements and areas are approximate and whilst every effort has been made to ensure the accuracy of the plan contained here, no responsibility is taken for any error, omission or misstatement.



Victorian freehold house | Three bedrooms - two bathrooms | 1243 Sq' - 115.43 SqM | Two off street car parking spaces | EPC rating D | St Peter's Conservation Area



hortonandgarton.co.uk

Sales 020 8819 0510

Lettings 020 8819 0511

172 King Street, Hammersmith, W6 0QU