

# FOR SALE

---

Cobbold Road,  
Shepherd's Bush, W12

---

Terraced House  
Wendell Park

---

£1,350,000 fh

---

4  2  2 



**horton  
andgarton**

SALES / LETTINGS / PROPERTY MANAGEMENT

hortonandgarton.co.uk | Sales 020 8819 0510 | Lettings 020 8819 0511  
172 King Street, Hammersmith, W6 0QU



# FOR SALE

---

Cobbold Road,  
Shepherd's Bush, W12

---

Terraced House  
Wendell Park

---

£1,350,000 fh

---

4  2  2 



**horton  
andgarton**

SALES / LETTINGS / PROPERTY MANAGEMENT

hortonandgarton.co.uk | Sales 020 8819 0510 | Lettings 020 8819 0511  
172 King Street, Hammersmith, W6 0QU



# FOR SALE

---

Cobbold Road,  
Shepherd's Bush, W12

---

Terraced House  
Wendell Park

---

£1,350,000 fh

---

4  2  2 

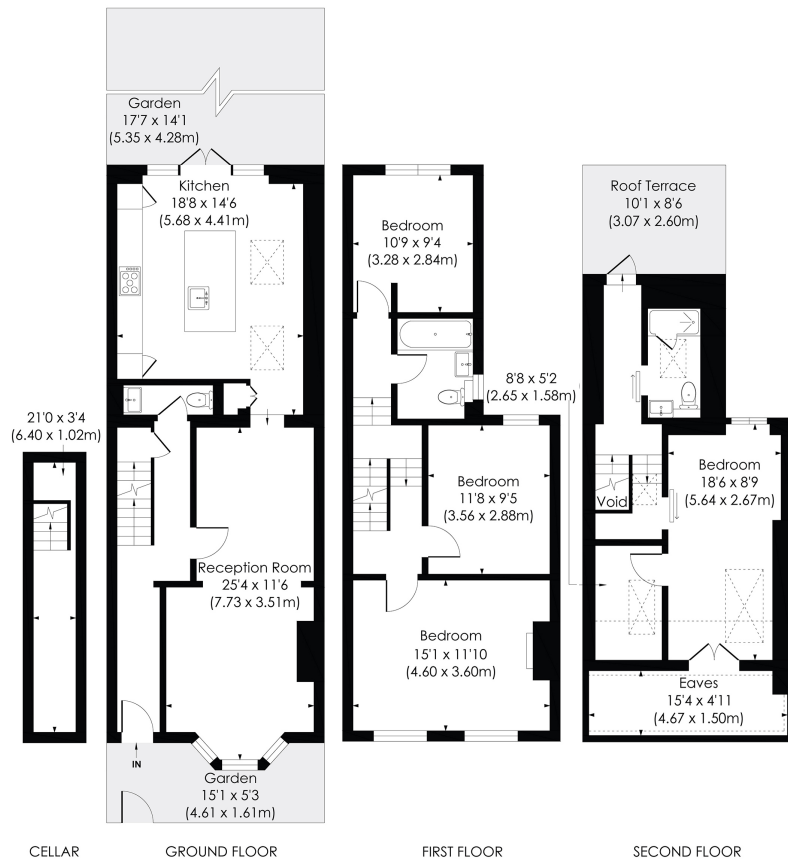


**horton  
andgarton**

SALES / LETTINGS / PROPERTY MANAGEMENT

hortonandgarton.co.uk | Sales 020 8819 0510 | Lettings 020 8819 0511  
172 King Street, Hammersmith, W6 0QU





**COBBOLD ROAD, W12**

Approx. Gross Internal Floor Area  
**1696 Sq. ft/157.54 Sq. m** (Including Reduced Height Area)  
**1570 Sq. ft/145.87 Sq. m** (Excluding Reduced Height Area)

© Pixangle Property Marketing Ltd. info@pixangle.com Tel: 0208 870 2118

This floor plan has been prepared for the purpose of illustration only in accordance with the latest RICS code of measuring practice and is not to scale. All measurements and areas are approximate and whilst every effort has been made to ensure the accuracy of the plan contained here, no responsibility is taken for any error, omission or misstatement.



Victorian bay fronted house | Four Bedrooms - two bathrooms | 1696 Sq' - 157.5 SqM | Garden | EPC rating D | Wendell Park



hortonandgarton.co.uk  
 Sales 020 8819 0510  
 Lettings 020 8819 0511

172 King Street, Hammersmith, W6 0QU