

# FOR SALE

---

Lime Grove,  
Shepherd's Bush, W12

---

Flat  
West London

---

£775,000 sh of fh

---

2  2  0 

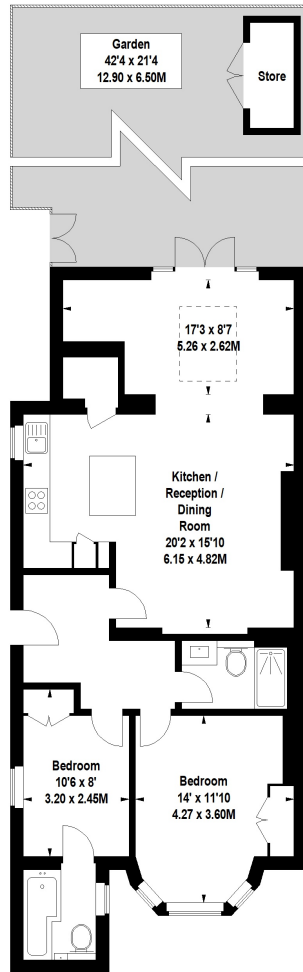


**horton  
andgarton**

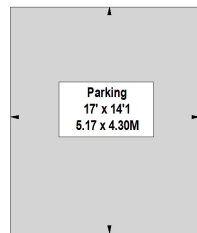
SALES / LETTINGS / PROPERTY MANAGEMENT

hortonandgarton.co.uk | Sales 020 8819 0510 | Lettings 020 8819 0511  
172 King Street, Hammersmith, W6 0QU





LOWER GROUND FLOOR



GROUND FLOOR

**LIME GROVE, W12**  
 Approximate Gross Internal Area  
**919 Sq' / 85 Sq.M**

Floor Plan produced by Mays Floorplans © Tel 020 3397 4594  
 Illustration for identification purposes only, not to scale.  
 All measurements are maximum, and include wardrobes and window bays where applicable

**horton  
 and garton**



Victorian garden flat | Two bedrooms - Two bathrooms |  
 919 Sq' - 85 SqM | 42' West-facing garden | EPC rating  
 D | Shepherd's Bush



hortonandgarton.co.uk  
 Sales 020 8819 0510  
 Lettings 020 8819 0511

172 King Street, Hammersmith, W6 0QU