

FOR SALE

Glebe Street,
The Glebe Estate, W4

Terraced House
The Glebe Estate

£1,850,000 fh

4  2  2 



**horton
andgarton**

SALES / LETTINGS / PROPERTY MANAGEMENT

hortonandgarton.co.uk | Sales 020 3989 6464 | Lettings 020 3989 5454
161 Chiswick High Road, London, W4 2DT



FOR SALE

Glebe Street,
The Glebe Estate, W4

Terraced House
The Glebe Estate

£1,850,000 fh

4  2  2 



**horton
andgarton**

SALES / LETTINGS / PROPERTY MANAGEMENT

hortonandgarton.co.uk | Sales 020 3989 6464 | Lettings 020 3989 5454
161 Chiswick High Road, London, W4 2DT



FOR SALE

Glebe Street,
The Glebe Estate, W4

Terraced House
The Glebe Estate

£1,850,000 fh

4  2  2 

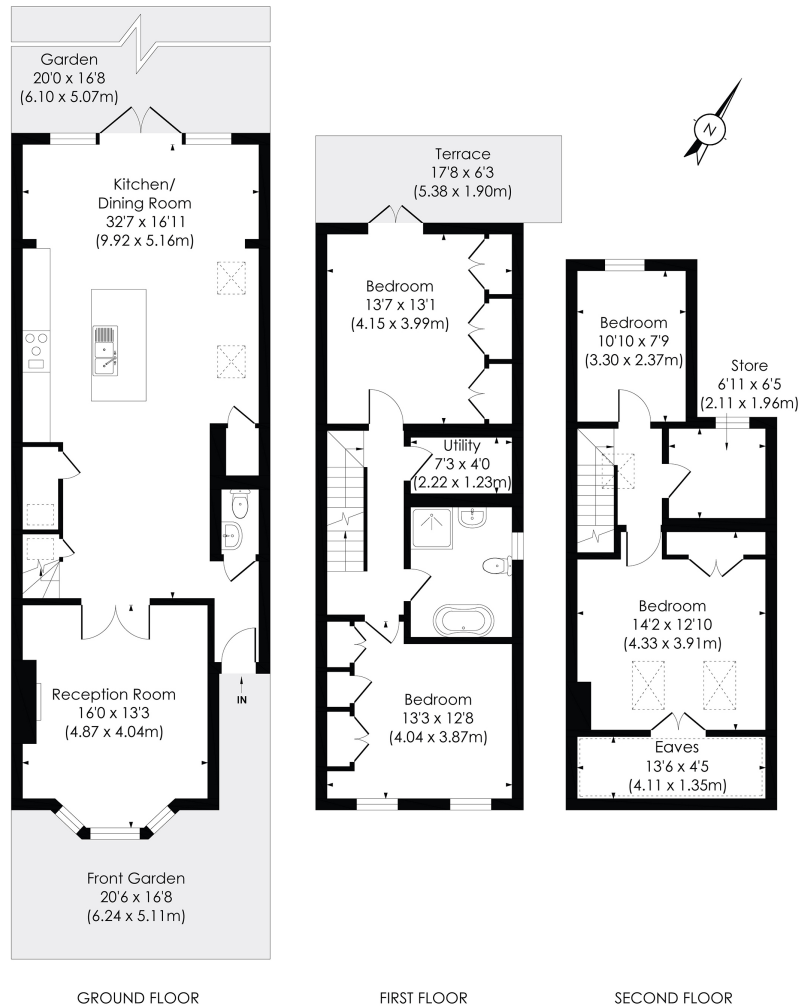


**horton
andgarton**

SALES / LETTINGS / PROPERTY MANAGEMENT

hortonandgarton.co.uk | Sales 020 3989 6464 | Lettings 020 3989 5454
161 Chiswick High Road, London, W4 2DT





Refurbished period house | Superbly presented throughout | 1682 Sq' - 156.28 SqM | EPC rating C | Four bedrooms - Two bathrooms | Glebe Estate



hortonandgarton.co.uk
 Sales 020 3989 6464
 Lettings 020 3989 5454

161 Chiswick High Road, London, W4 2DT



© Pixangle Property Marketing Ltd. info@pixangle.com Tel: 0208 870 2118
 This floor plan has been prepared for the purpose of illustration only in accordance with the latest RICS code of measuring practice and is not to scale. All measurements and areas are approximate and whilst every effort has been made to ensure the accuracy of the plan contained here, no responsibility is taken for any error, omission or misstatement.

GLEBE STREET, W4
 Approx. Gross Internal Floor Area
1742 Sq' / 161.83 SqM (Incl. reduced head height)
1682 Sq' / 156.28 SqM (Excl. reduced head height)