

# FOR SALE

---

Grove Park Mews,  
Chiswick, W4

---

Flat  
Chiswick

---

£475,000 sh of fh

---

2  2  1 



**horton  
andgarton**

SALES / LETTINGS / PROPERTY MANAGEMENT

hortonandgarton.co.uk | Sales 020 3989 6464 | Lettings 020 3989 5454  
161 Chiswick High Road, London, W4 2DT



# FOR SALE

---

Grove Park Mews,  
Chiswick, W4

---

Flat  
Chiswick

---

£475,000 sh of fh

---

2  2  1 



**horton  
andgarton**

SALES / LETTINGS / PROPERTY MANAGEMENT

hortonandgarton.co.uk | Sales 020 3989 6464 | Lettings 020 3989 5454  
161 Chiswick High Road, London, W4 2DT



# FOR SALE

Grove Park Mews,  
Chiswick, W4

Flat  
Chiswick

£475,000 sh of fh

2  2  1 

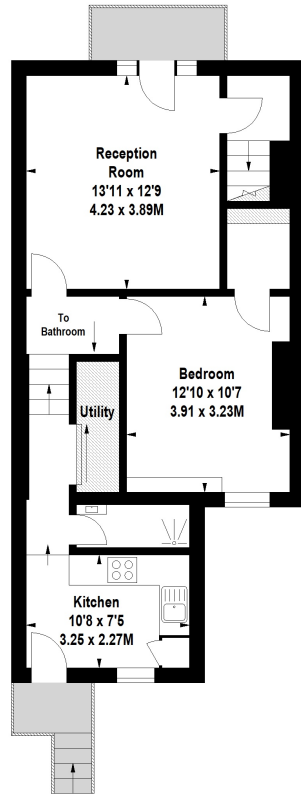


**horton  
andgarton**

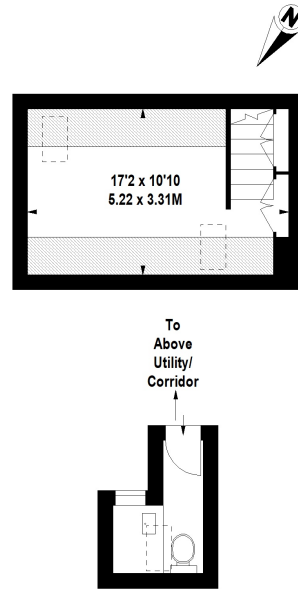
SALES / LETTINGS / PROPERTY MANAGEMENT

hortonandgarton.co.uk | Sales 020 3989 6464 | Lettings 020 3989 5454  
161 Chiswick High Road, London, W4 2DT





SECOND FLOOR



THIRD FLOOR

Under 1.5m head height

**GROVE PARK MEWS CHISWICK, W4**

Approximate Gross Internal Area  
807 Sq' / 75 Sq.M

Floor Plan produced by Mays Floorplans © Tel 020 3397 4594  
Illustration for identification purposes only, not to scale.  
All measurements are maximum, and include wardrobes and window bays where applicable



First floor maisonette | South facing terrace | 807 Sq' - 75 SqM | Two bedrooms - Two bathrooms | EPC rating D | Grove Park



hortonandgarton.co.uk  
Sales 020 3989 6464  
Lettings 020 3989 5454

161 Chiswick High Road, London, W4 2DT