

# FOR SALE

---

Beaulieu Place,  
Chiswick Park, W4

---

Flat  
West London

---

£450,000 sh of fh

---

2  1  1 

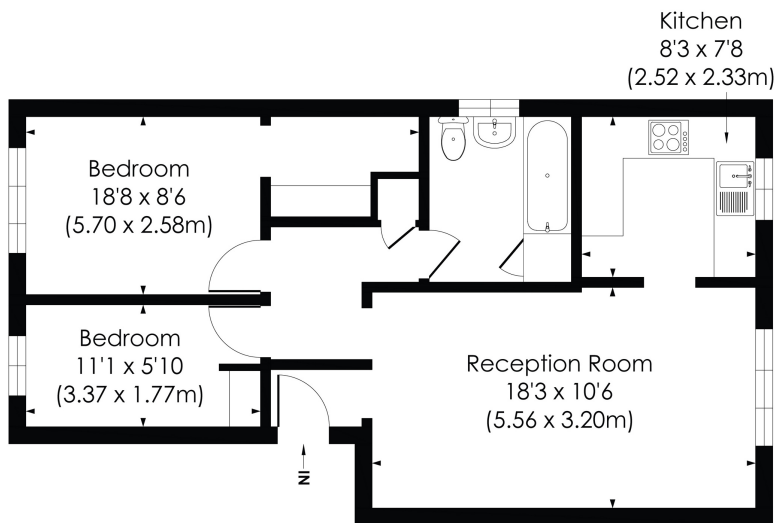


**horton  
andgarton**

SALES / LETTINGS / PROPERTY MANAGEMENT

hortonandgarton.co.uk | Sales 020 3989 6464 | Lettings 020 3989 5454  
161 Chiswick High Road, London, W4 2DT





GROUND FLOOR

**BEAULIEU PLACE, W4**

Approx. Gross Internal Floor Area

**580 Sq' / 53.90 SqM**



© Pixangle Property Marketing Ltd. info@pixangle.com Tel: 0208 870 2118

This floor plan has been prepared for the purpose of illustration only in accordance with the latest RICS code of measuring practice and is not to scale. All measurements and areas are approximate and whilst every effort has been made to ensure the accuracy of the plan contained here, no responsibility is taken for any error, omission or misstatement.



Purpose built ground floor flat | Allocated parking space  
| 580 Sq' - 53.90 SqM | EPC rating D | Two bedrooms -  
One bathroom | Chiswick Park



hortonandgarton.co.uk

Sales 020 3989 6464

Lettings 020 3989 5454

161 Chiswick High Road, London, W4 2DT