

FOR SALE

Marryat Court Cromwell Avenue,
Hammersmith , W6

Flat
West London

£500,000 lh

2  1  1 

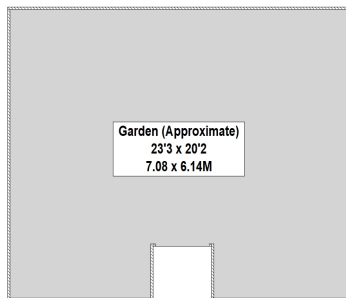


**horton
andgarton**

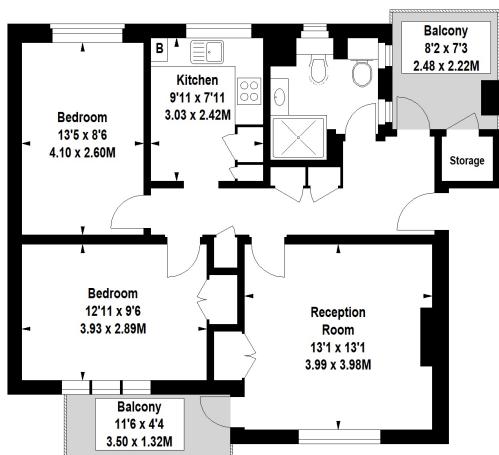
SALES / LETTINGS / PROPERTY MANAGEMENT

hortonandgarton.co.uk | Sales 020 8819 0510 | Lettings 020 8819 0511
172 King Street, Hammersmith, W6 0QU





GROUND FLOOR



FIRST FLOOR

**MARRYAT COURT,
CROMWELL AVENUE, W6**
Approximate Gross Internal Area
700 Sq' / 65 Sq.M

Floor Plan produced by Mays Floorplans ©. Tel 020 3397 4594
Illustration for identification purposes only, not to scale.
All measurements are maximum, and include wardrobes and window bays where applicable



Purpose built flat | Two terraces and garden | 700 Sq' - 65 SqM | EPC rating D | Two bedrooms - One bathroom | Ravenscourt Park



hortonandgarton.co.uk
Sales 020 8819 0510
Lettings 020 8819 0511

172 King Street, Hammersmith, W6 0QU