

FOR SALE

Samels Court,
Hammersmith, W6

Flat
Riverside

£500,000 sh of fh

2  1  1 

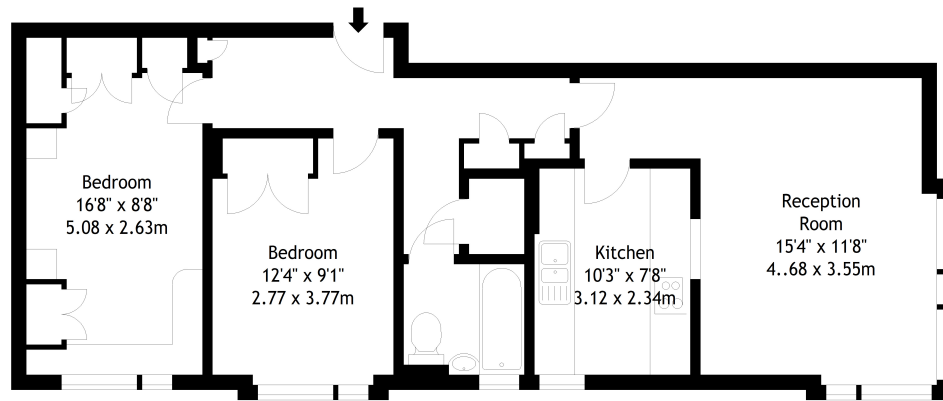


**horton
andgarton**

SALES / LETTINGS / PROPERTY MANAGEMENT

hortonandgarton.co.uk | Sales 020 8819 0510 | Lettings 020 8819 0511
172 King Street, Hammersmith, W6 0QU





Second Floor



**horton
and garton**

Samels Court, South Black Lion Lane, W6
Gross Internal Area 705 sq ft - 65.49 sq m

Drawn from supplied plans. All measurements are approximate.
This floor plan is for illustrative purposes only and is not to scale.
© Horton and Garton Estate Agents 2024



Purpose built apartment | Off-street parking | 705 Sq' - 65 SqM | EPC rating C | Two bedrooms - One bathroom | Riverside



hortonandgarton.co.uk
Sales 020 8819 0510
Lettings 020 8819 0511

172 King Street, Hammersmith, W6 0QU