

FOR SALE

Beauclerc Road,
Hammersmith, W6

Flat
Brackenbury Village

£650,000 lh

2  1  1 



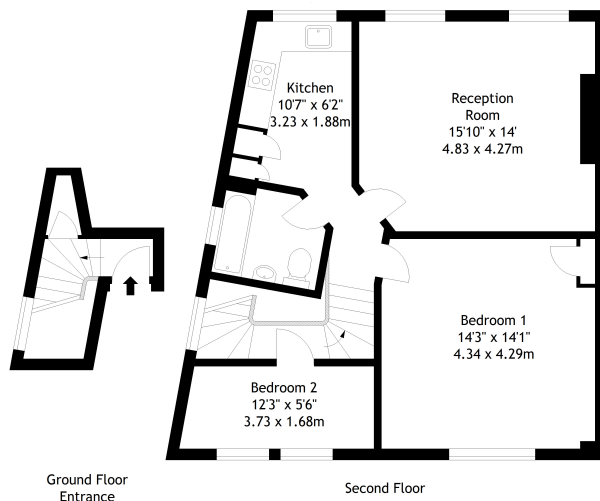
**horton
andgarton**

SALES / LETTINGS / PROPERTY MANAGEMENT

hortonandgarton.co.uk | Sales 020 8819 0510 | Lettings 020 8819 0511
172 King Street, Hammersmith, W6 0QU



horton and garton



Beaulerc Road, W6
Gross Internal Area 765 sq ft - 71.07 sq m

Drawn from supplied plans. All measurements are approximate.
This floor plan is for illustrative purposes only and is not to scale.
© Horton and Garton Estate Agents 2019



Victorian conversion flat | Two bedrooms - One bathroom | 765 Sq' - 71.07 SqM | Spacious reception room | EPC rating D | Brackenbury Village



hortonandgarton.co.uk
Sales 020 8819 0510
Lettings 020 8819 0511

172 King Street, Hammersmith, W6 0QU