

FOR SALE

Benbow Road,
Hammersmith, W6

Flat
Brackenbury Village

£650,000 sh of fh

2  1  1 

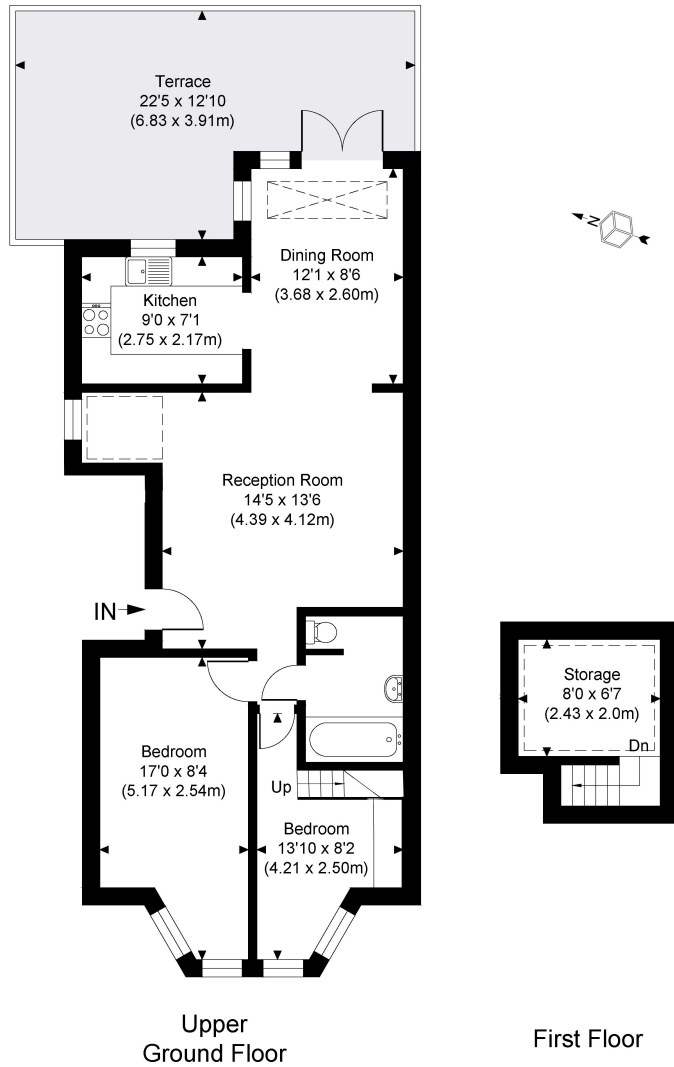


**horton
andgarton**

SALES / LETTINGS / PROPERTY MANAGEMENT

hortonandgarton.co.uk | Sales 020 8819 0510 | Lettings 020 8819 0511
172 King Street, Hammersmith, W6 0QU





Victorian conversion | Two bedrooms - One bathroom |
 664 Sq' – 61.69 SqM | 22' South facing roof terrace |
 EPC rating C | Brackenbury Village



hortonandgarton.co.uk
 Sales 020 8819 0510
 Lettings 020 8819 0511

172 King Street, Hammersmith, W6 0QU

**horton
andgarton**

BENBOW ROAD

Gross Internal Area 722 sq. ft / 67.11 sq. m
 CH = Ceiling Heights
 For identification purposes only.
 The Position and size of doors, windows, appliances
 Bedroom and other features are approximate only.
 For illustrative purposes only - not to scale