

FOR SALE

Devonshire Road,
Chiswick, W4

Terraced House
West London

£1,300,000 fh

2  2  2 

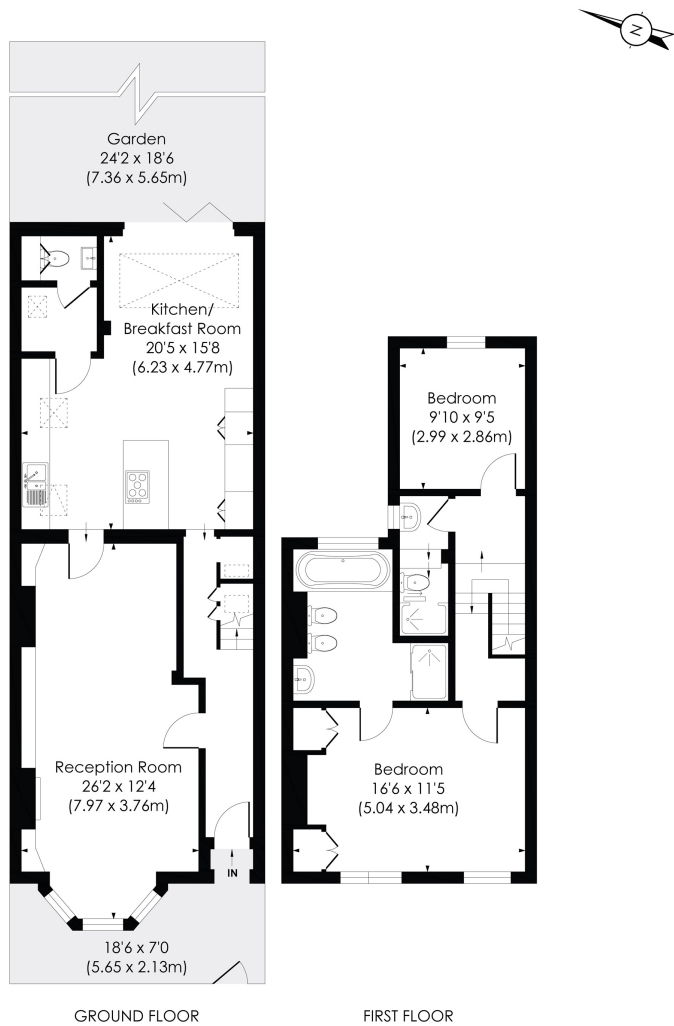


**horton
andgarton**

SALES / LETTINGS / PROPERTY MANAGEMENT

hortonandgarton.co.uk | Sales 020 3989 6464 | Lettings 020 3989 5454
161 Chiswick High Road, London, W4 2DT





DEVONSHIRE ROAD, W4

Approx. Gross Internal Floor Area

1211 Sq' / 112.46 SqM

**horton
andgarton**

© Pixangle Property Marketing Ltd. info@pixangle.com Tel: 0208 870 2118

This floor plan has been prepared for the purpose of illustration only in accordance with the latest RICS code of measuring practice and is not to scale. All measurements and areas are approximate and whilst every effort has been made to ensure the accuracy of the plan contained here, no responsibility is taken for any error, omission or misstatement.



Victorian house | Two bedrooms - Two bathrooms | 1211 Sq' - 112.53 SqM | Potential to extend (STPP) | EPC rating C | Glebe Estate



hortonandgarton.co.uk

Sales 020 3989 6464

Lettings 020 3989 5454

161 Chiswick High Road, London, W4 2DT