

FOR SALE

Bradmore Park Road,
Hammersmith, W6

End of Terrace House
Brackenbury Village

£1,600,000 fh

4  2  1 



**horton
andgarton**

SALES / LETTINGS / PROPERTY MANAGEMENT

hortonandgarton.co.uk | Sales 020 8819 0510 | Lettings 020 8819 0511
172 King Street, Hammersmith, W6 0QU



FOR SALE

Bradmore Park Road,
Hammersmith, W6

End of Terrace House
Brackenbury Village

£1,600,000 fh

4  2  1 



**horton
andgarton**

SALES / LETTINGS / PROPERTY MANAGEMENT

hortonandgarton.co.uk | Sales 020 8819 0510 | Lettings 020 8819 0511
172 King Street, Hammersmith, W6 0QU



FOR SALE

Bradmore Park Road,
Hammersmith, W6

End of Terrace House
Brackenbury Village

£1,600,000 fh

4  2  1 

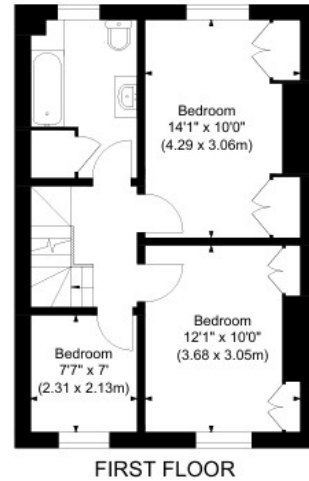
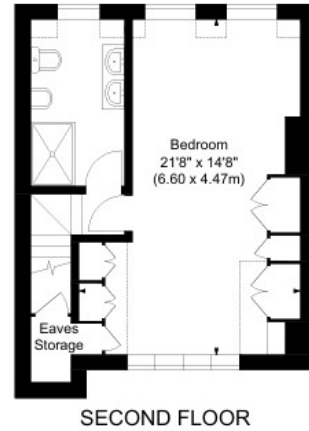


**horton
andgarton**

SALES / LETTINGS / PROPERTY MANAGEMENT

hortonandgarton.co.uk | Sales 020 8819 0510 | Lettings 020 8819 0511
172 King Street, Hammersmith, W6 0QU





BRADMORE PARK ROAD,
APPROXIMATE GROSS INTERNAL AREA
1489 Sq'/138.32 SqM
APPROXIMATE EAVES STORAGE AREA
15 Sq'/1.41 SqM
APPROXIMATE TOTAL AREA
1504 Sq'/139.73 SqM

Not to scale, for guidance only and must not be relied upon as a statement of fact.
All measurements and areas are approximate only

**horton
and garton**



Victorian family house | Four bedrooms - Two
bathrooms | 1489 Sq' - 138.32 SqM | Open plan family
kitchen | EPC rating D | Brackenbury Village



hortonandgarton.co.uk
Sales 020 8819 0510
Lettings 020 8819 0511

172 King Street, Hammersmith, W6 0QU