

FOR SALE

Jeddo Road,
Shepherd's Bush, W12

Flat
Wendell Park

£585,000 lh

2  2  1 

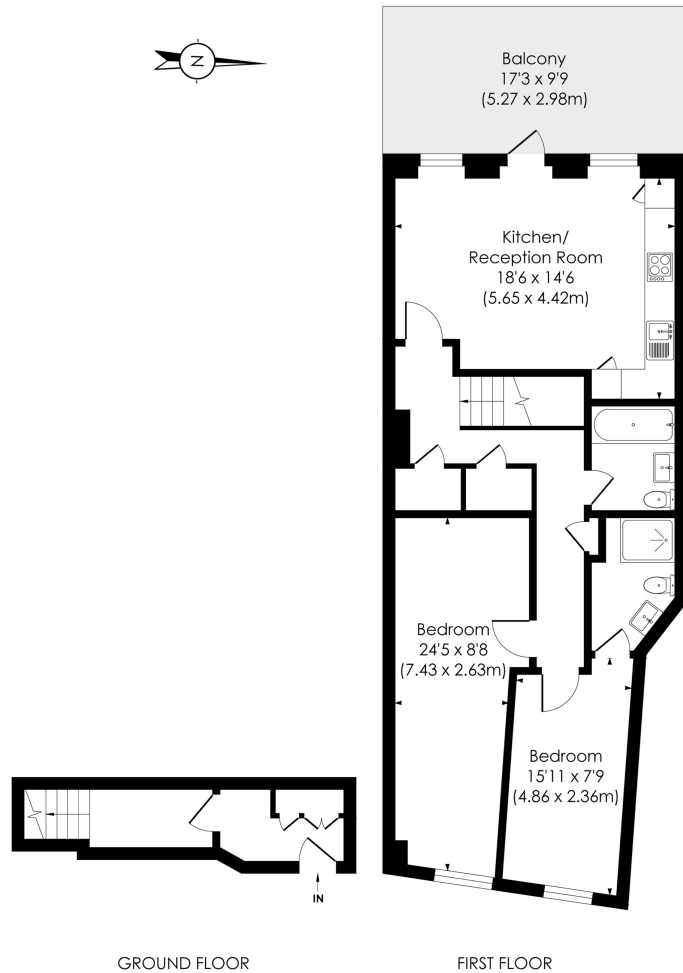


**horton
andgarton**

SALES / LETTINGS / PROPERTY MANAGEMENT

hortonandgarton.co.uk | Sales 020 8819 0510 | Lettings 020 8819 0511
172 King Street, Hammersmith, W6 0QU





JEDDO ROAD, W12

Approx. Gross Internal Floor Area
910 Sq'/84.51 SqM



© Pixangle Property Marketing Ltd. info@pixangle.com Tel: 0208 870 2118

This floor plan has been prepared for the purpose of illustration only in accordance with the latest RICS code of measuring practice and is not to scale. All measurements and areas are approximate and whilst every effort has been made to ensure the accuracy of the plan contained here, no responsibility is taken for any error, omission or misstatement.



First floor purpose built flat | Two bedrooms - Two bathrooms | 910 Sq' - 84.51 SqM | Private terrace | EPC rating B | Wendell Park



hortonandgarton.co.uk
Sales 020 8819 0510
Lettings 020 8819 0511

172 King Street, Hammersmith, W6 0QU