

FOR SALE

Carthew Road,
Hammersmith, W6

Terraced House
Brackenbury Village

£1,650,000 fh

3  2  1 

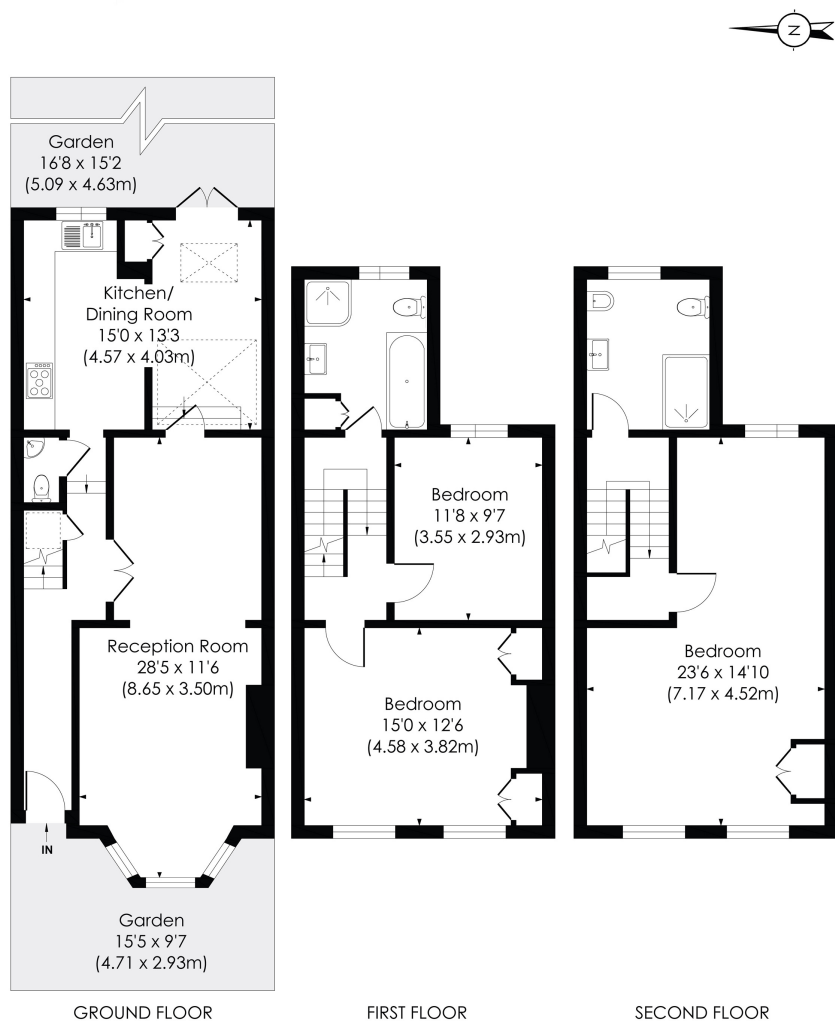


**horton
andgarton**

SALES / LETTINGS / PROPERTY MANAGEMENT

hortonandgarton.co.uk | Sales 020 8819 0510 | Lettings 020 8819 0511
172 King Street, Hammersmith, W6 0QU





CARTHEW ROAD, W6

Approx. Gross Internal Floor Area
1476 Sq' / 137.16 SqM



© Pixangle Property Marketing Ltd. info@pixangle.com Tel: 0208 870 2118

This floor plan has been prepared for the purpose of illustration only in accordance with the latest RICS code of measuring practice and is not to scale. All measurements and areas are approximate and whilst every effort has been made to ensure the accuracy of the plan contained here, no responsibility is taken for any error, omission or misstatement.



Victorian family home | Three bedrooms - Two bathrooms | 1476 Sq' - 137 SqM | No chain | EPC rating C | Brackenbury Village



hortonandgarton.co.uk
 Sales 020 8819 0510
 Lettings 020 8819 0511

172 King Street, Hammersmith, W6 0QU