

# FOR SALE

---

Sharp House, Goldhawk Road,  
Shepherd's Bush, W12

---

Flat  
West London

---

£700,000 lh

---

2  2  1 

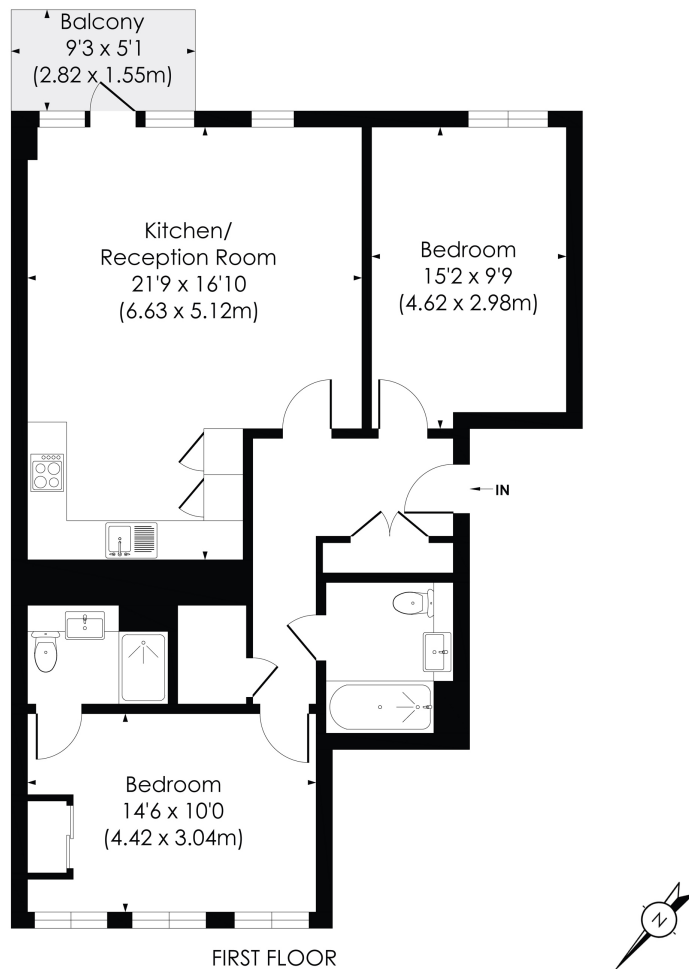


**horton  
andgarton**

SALES / LETTINGS / PROPERTY MANAGEMENT

hortonandgarton.co.uk | Sales 020 8819 0510 | Lettings 020 8819 0511  
172 King Street, Hammersmith, W6 0QU





**GOLDHAWK ROAD, W12**

Approx. Gross Internal Floor Area  
**864 Sq' / 80.24 SqM**

**horton  
andgarton**

© Pixangle Property Marketing Ltd. info@pixangle.com Tel: 0208 870 2118  
This floor plan has been prepared for the purpose of illustration only in accordance with the latest RICS code of measuring practice and is not to scale. All measurements and areas are approximate and whilst every effort has been made to ensure the accuracy of the plan contained here, no responsibility is taken for any error, omission or misstatement.



Modern gated development | Two bedrooms - Two bathrooms | 864 Sq' - 80.24 SqM | Lift and underground parking | EPC rating C | Brackenbury Village



hortonandgarton.co.uk  
Sales 020 8819 0510  
Lettings 020 8819 0511

172 King Street, Hammersmith, W6 0QU