

# FOR SALE

---

Cambridge Grove,  
Hammersmith, W6

---

Terraced House  
West London

---

£1,300,000 fh

---

3  2  2 



**horton  
andgarton**

SALES / LETTINGS / PROPERTY MANAGEMENT

hortonandgarton.co.uk | Sales 020 8819 0510 | Lettings 020 8819 0511  
172 King Street, Hammersmith, W6 0QU



# FOR SALE

---

Cambridge Grove,  
Hammersmith, W6

---

Terraced House  
West London

---

£1,300,000 fh

---

3  2  2 



**horton  
andgarton**

SALES / LETTINGS / PROPERTY MANAGEMENT

hortonandgarton.co.uk | Sales 020 8819 0510 | Lettings 020 8819 0511  
172 King Street, Hammersmith, W6 0QU



# FOR SALE

Cambridge Grove,  
Hammersmith, W6

Terraced House  
West London

£1,300,000 fh

3  2  2 

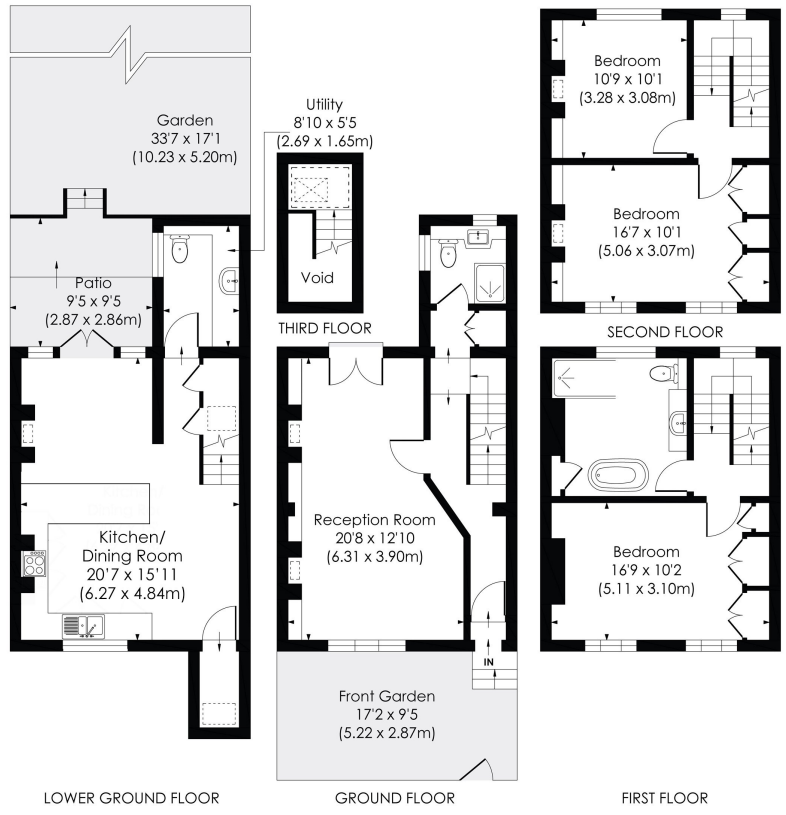


**horton  
andgarton**

SALES / LETTINGS / PROPERTY MANAGEMENT

hortonandgarton.co.uk | Sales 020 8819 0510 | Lettings 020 8819 0511  
172 King Street, Hammersmith, W6 0QU





**CAMBRIDGE GROVE, W6**

Approx. Gross Internal Floor Area  
**1511 Sq'/140.38 SqM** (Including RHH)  
**1487 Sq'/138.15 SqM** (Excluding RHH)



© Pixangle Property Marketing Ltd. info@pixangle.com Tel: 0208 870 2118  
 This floor plan has been prepared for the purpose of illustration only in accordance with the latest RICS code of measuring practice and is not to scale. All measurements and areas are approximate and whilst every effort has been made to ensure the accuracy of the plan contained here, no responsibility is taken for any error, omission or misstatement.



Victorian family home | Three bedrooms - Two bathrooms | 1487 Sq' – 138.15 SqM | Superbly presented throughout | EPC rating C | Hammersmith



hortonandgarton.co.uk  
 Sales 020 8819 0510  
 Lettings 020 8819 0511

172 King Street, Hammersmith, W6 0QU