

# FOR SALE

---

Thames Village,  
Chiswick, W4

---

Flat  
Grove Park

---

£825,000 sh of fh

---

2  2  1 

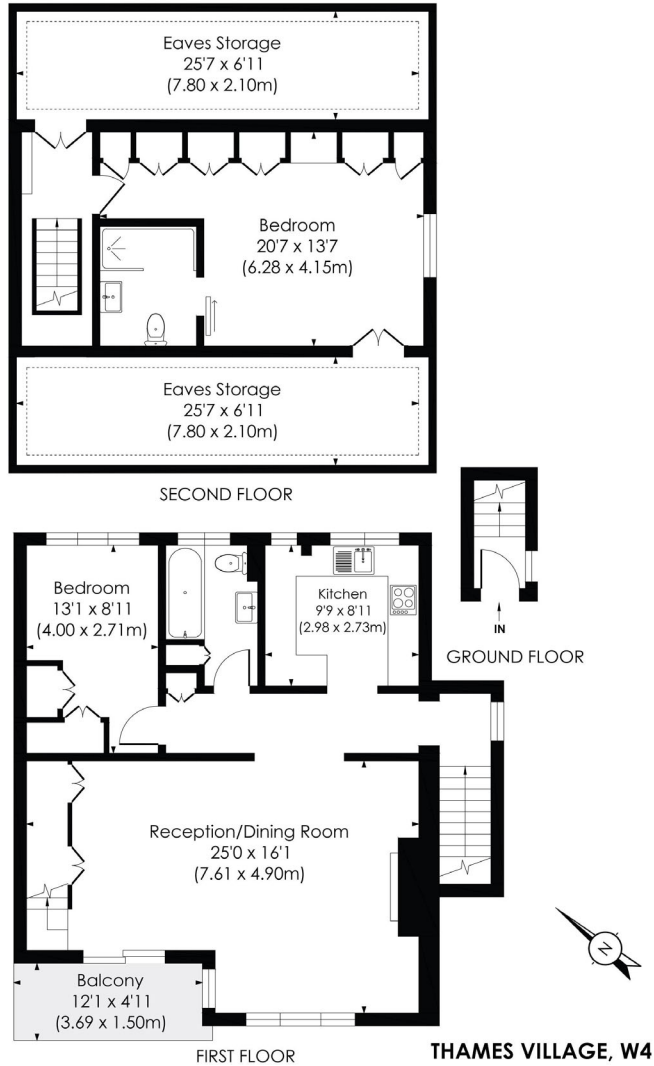


**horton  
andgarton**

SALES / LETTINGS / PROPERTY MANAGEMENT

hortonandgarton.co.uk | Sales 020 3989 6464 | Lettings 020 3989 5454  
161 Chiswick High Road, London, W4 2DT





Approx. Gross Internal Floor Area  
**1096 Sq' / 101.79 SqM** (Excluding Reduced Height)  
**1474 Sq' / 136.89 SqM** (Including Reduced Height)



This floor plan has been prepared for the purpose of illustration only in accordance with the latest RICS code of measuring practice and is not to scale. All measurements and areas are approximate and whilst every effort has been made to ensure the accuracy of the plan contained here, no responsibility is taken for any error, omission or misstatement.



Split level maisonette | Two bedrooms - Two bathrooms  
 | 1096 Sq' - 101.79 SqM | Close to the River Thames |  
 EPC rating D | Chiswick



hortonandgarton.co.uk  
 Sales 020 3989 6464  
 Lettings 020 3989 5454

161 Chiswick High Road, London, W4 2DT