

FOR SALE

British Grove South,
Chiswick Riverside, W4

Flat
Chiswick Riverside

£430,000 sh of fh

1  1  1 

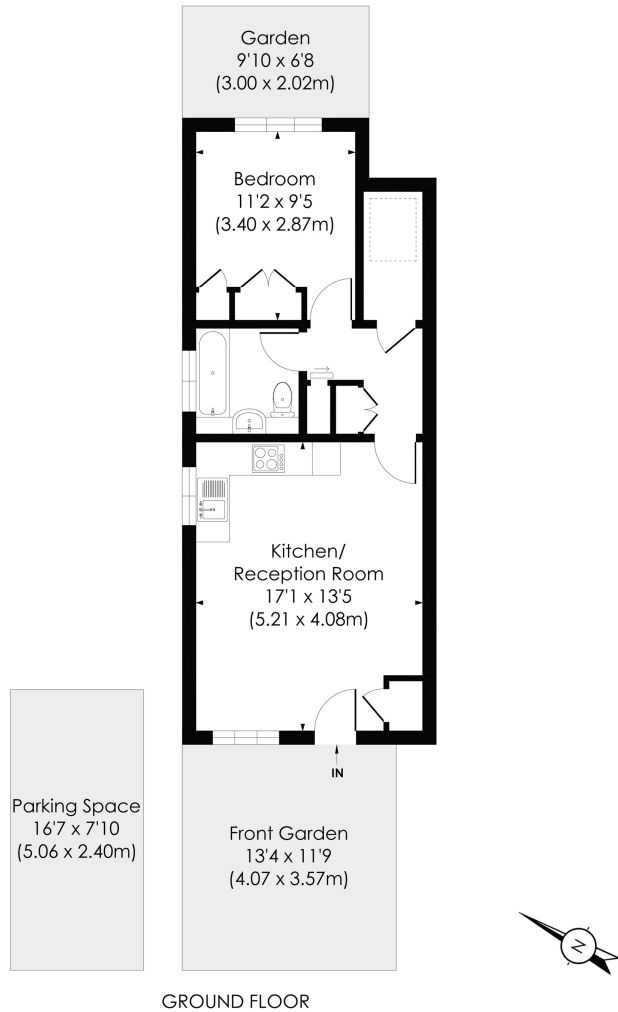


**horton
andgarton**

SALES / LETTINGS / PROPERTY MANAGEMENT

hortonandgarton.co.uk | Sales 020 3989 6464 | Lettings 020 3989 5454
161 Chiswick High Road, London, W4 2DT





BRITISH GROVE SOUTH, W4

Approx. Gross Internal Floor Area

452 Sq' / 42.03 SqM



© Pixangle Property Marketing Ltd. info@pixangle.com Tel: 0208 870 2118

This floor plan has been prepared for the purpose of illustration only in accordance with the latest RICS code of measuring practice and is not to scale. All measurements and areas are approximate and whilst every effort has been made to ensure the accuracy of the plan contained here, no responsibility is taken for any error, omission or misstatement.



Ground floor garden flat | One bedroom - One bathroom
 | 452 Sq' - 42.03 SqM | Allocated off street parking |
 EPC rating E | Chiswick Riverside



hortonandgarton.co.uk

Sales 020 3989 6464

Lettings 020 3989 5454

161 Chiswick High Road, London, W4 2DT