

FOR SALE

Twyford Avenue,
Ealing, W3

Semi-Detached House
Ealing

£2,000,000 fh

6  3  2 

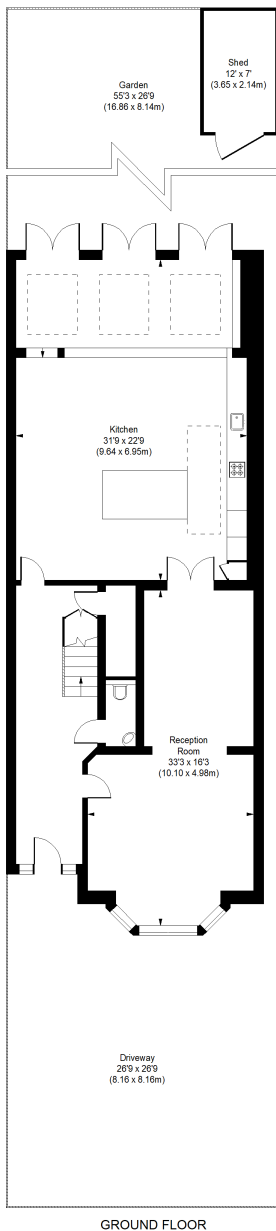


**horton
andgarton**

SALES / LETTINGS / PROPERTY MANAGEMENT

hortonandgarton.co.uk | Sales 020 3989 6464 | Lettings 020 3989 5454
161 Chiswick High Road, London, W4 2DT





TWYFORD AVENUE, W3

APPROXIMATE GROSS INTERNAL AREA

Main House : 3400 Sq/ 315.86 SqM

Eaves & Reduced Height : 272 Sq/ 25.27 SqM

Total : 3400 Sq/ 315.86 SqM

**horton
andgarton**

Not to scale, for guidance only and must not be relied upon as a statement of fact.
All measurements and areas are approximate only



Semi detached family house | Six bedrooms - Three bathrooms | 3400 Sq' - 315.86 SqM | 56' South facing garden | EPC rating D | Ealing



hortonandgarton.co.uk

Sales 020 3989 6464

Lettings 020 3989 5454

161 Chiswick High Road, London, W4 2DT