

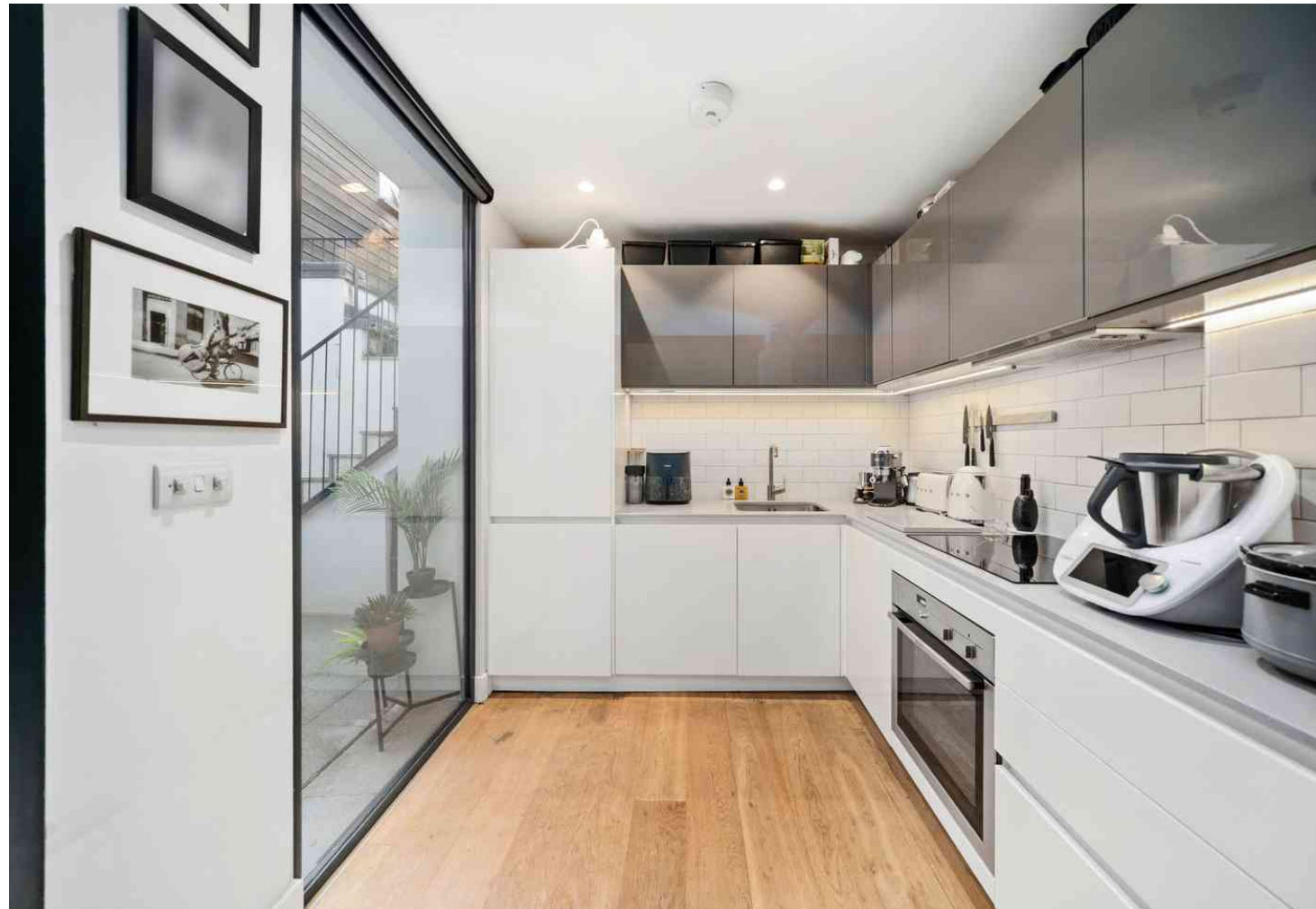
FOR SALE

Greyhound Road,
Hammersmith, W6

Flat
West London

£475,000 lh

1  1  1 

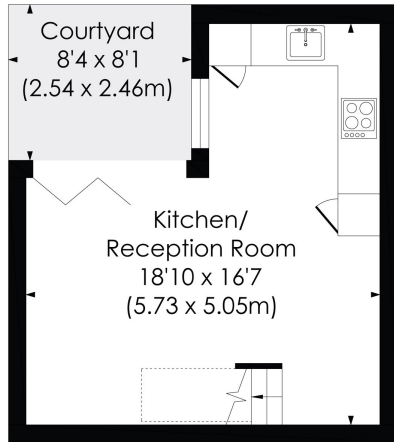


**horton
andgarton**

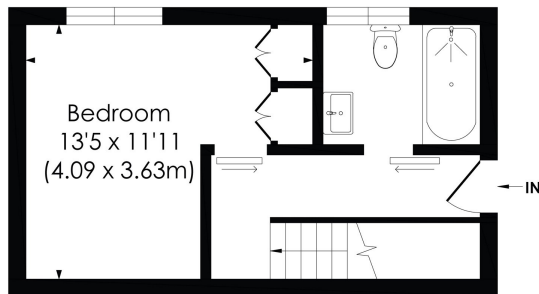
SALES / LETTINGS / PROPERTY MANAGEMENT

hortonandgarton.co.uk | Sales 020 8819 0510 | Lettings 020 8819 0511
172 King Street, Hammersmith, W6 0QU





LOWER GROUND FLOOR



GROUND FLOOR

GREYHOUND ROAD, W6

Approx. Gross Internal Floor Area
503 Sq'/46.71 SqM

**horton
andgarton**

© Pixangle Property Marketing Ltd. info@pixangle.com Tel: 0208 870 2118

This floor plan has been prepared for the purpose of illustration only in accordance with the latest RICS code of measuring practice and is not to scale. All measurements and areas are approximate and whilst every effort has been made to ensure the accuracy of the plan contained here, no responsibility is taken for any error, omission or misstatement.



Split-level ground floor flat | One bedroom - One bathroom | 503 Sq' - 46.71 SqM | Open plan living space | EPC rating C | Hammersmith



hortonandgarton.co.uk

Sales 020 8819 0510

Lettings 020 8819 0511

172 King Street, Hammersmith, W6 0QU