

FOR SALE

Sulgrave Road,
Hammersmith, W6

Flat
West London

£600,000 lh

3  2  1 

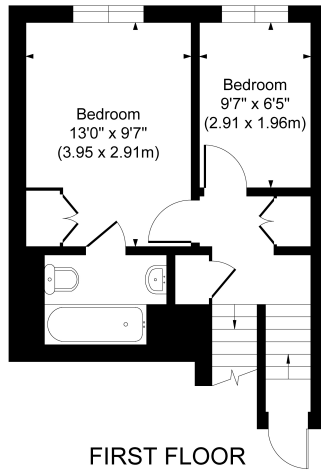
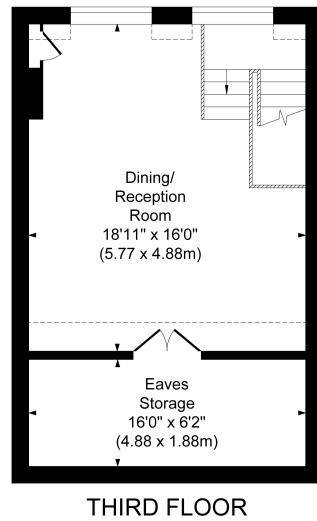
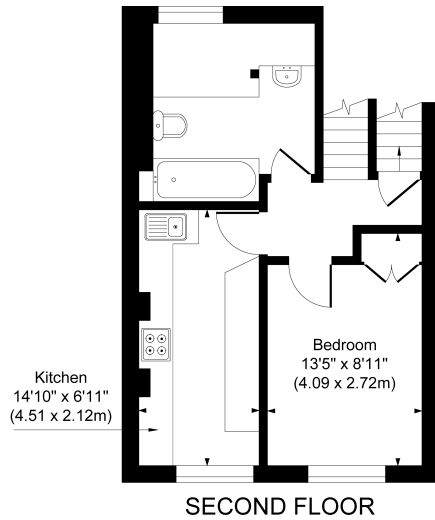


**horton
andgarton**

SALES / LETTINGS / PROPERTY MANAGEMENT

hortonandgarton.co.uk | Sales 020 8819 0510 | Lettings 020 8819 0511
172 King Street, Hammersmith, W6 0QU





**horton
andgarton**



SULGRAVE ROAD, W6
 APPROXIMATE GROSS INTERNAL AREA
1022 Sq'/94.95 SqM
 APPROXIMATE EAVES STORAGE AREA
99 Sq'/ 9.17 SqM
 APPROXIMATE TOTAL AREA
1121 Sq'/ 104.12 SqM

Not to scale, for guidance only and must not be relied upon as a statement of fact.
 All measurements and areas are approximate only



Victorian split-level maisonette | Three bedrooms - Two bathrooms | 1022 Sq' – 94.95 SqM | No chain | EPC rating C | Hammersmith



hortonandgarton.co.uk
 Sales 020 8819 0510
 Lettings 020 8819 0511

172 King Street, Hammersmith, W6 0QU