

FOR SALE

Thorney Hedge Road,
Gunnersbury, W4

Flat
Gunnersbury

£950,000 sh of fh

3  2  1 

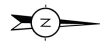
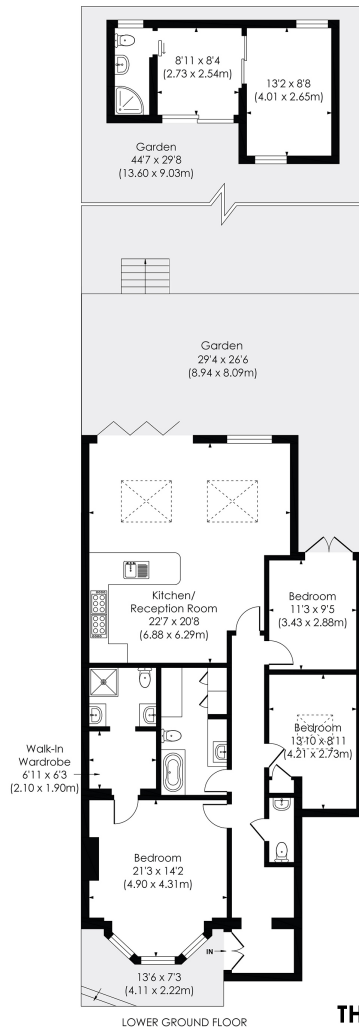


**horton
andgarton**

SALES / LETTINGS / PROPERTY MANAGEMENT

hortonandgarton.co.uk | Sales 020 3989 6464 | Lettings 020 3989 5454
161 Chiswick High Road, London, W4 2DT





THORNEY HEDGE ROAD, W4

Approx. Gross Internal Floor Area

1489 Sq' / 138.30 SqM (incl. outbuilding)

1251 Sq' / 116.20 SqM (excl. outbuilding)

© Pixangle Property Marketing Ltd. info@pixangle.com Tel: 0208 870 2118

This floor plan has been prepared for the purpose of illustration only in accordance with the latest RICS code of measuring practice and is not to scale. All measurements and areas are approximate and whilst every effort has been made to ensure the accuracy of the plan contained here, no responsibility is taken for any error, omission or misstatement.



Lower ground floor flat | Three bedrooms - Two bathrooms | 1251 Sq' - 116.20 SqM | 29' garden | EPC rating D | Gunnersbury



hortonandgarton.co.uk

Sales 020 3989 6464

Lettings 020 3989 5454

161 Chiswick High Road, London, W4 2DT