

# FOR SALE

---

Hartwood Road,  
Shepherd's Bush, W12

---

Ground Floor Maisonette  
Wendell Park

---

£625,000 sh of fh

---

2  1  1 

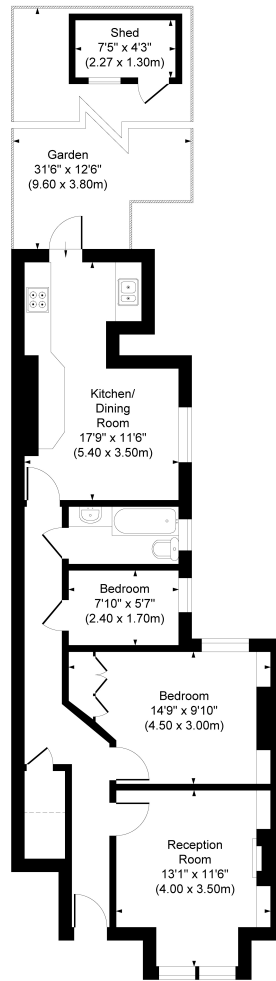


**horton  
andgarton**

SALES / LETTINGS / PROPERTY MANAGEMENT

hortonandgarton.co.uk | Sales 020 8819 0510 | Lettings 020 8819 0511  
172 King Street, Hammersmith, W6 0QU





GROUND FLOOR



**HARTSWOOD ROAD, W12**

APPROXIMATE GROSS INTERNAL AREA

**677 Sq' / 62.90 SqM**

APPROXIMATE SHED AREA

**32 Sq' / 2.95 SqM**

APPROXIMATE TOTAL AREA

**709 Sq' / 65.85 SqM**

Not to scale, for guidance only and must not be relied upon as a statement of fact.  
All measurements and areas are approximate only

**horton  
andgarton**



Edwardian ground floor maisonette | Two bedrooms -  
One bathroom | 677 Sq'- 62.90 SqM | 31' West facing  
garden | EPC rating C | Wendell Park



hortonandgarton.co.uk

Sales 020 8819 0510

Lettings 020 8819 0511

172 King Street, Hammersmith, W6 0QU