

FOR SALE

Chiswick Lane,
Chiswick, W4

Flat
Chiswick

£900,000 fh

3  1  2 

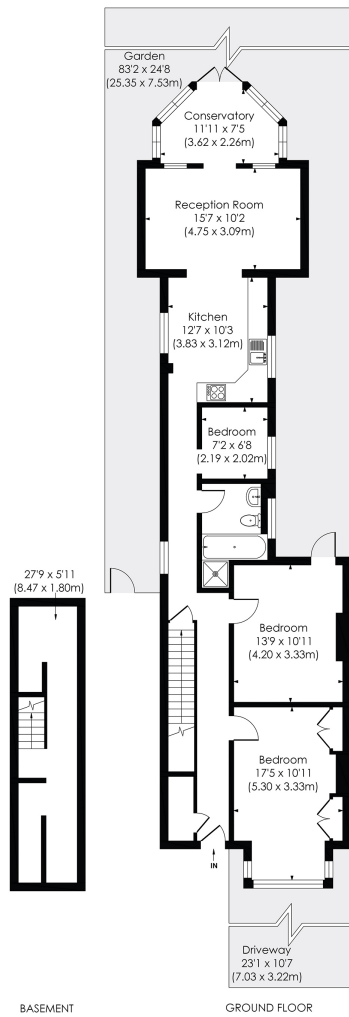


**horton
andgarton**

SALES / LETTINGS / PROPERTY MANAGEMENT

hortonandgarton.co.uk | Sales 020 3989 6464 | Lettings 020 3989 5454
161 Chiswick High Road, London, W4 2DT





CHISWICK LANE, W4

Approx. Gross Internal Floor Area
1215 Sq' / 112.87 SqM (incl. Basement)
1051 Sq' / 97.62 SqM (excl. Basement)

© Pixangle Property Marketing Ltd. info@pixangle.com Tel: 0208 870 2118

This floor plan has been prepared for the purpose of illustration only in accordance with the latest RICS code of measuring practice and is not to scale. All measurements and areas are approximate and whilst every effort has been made to ensure the accuracy of the plan contained here, no responsibility is taken for any error, omission or misstatement.



Ground floor conversion flat | Three bedrooms - One bathroom | 1051 Sq' - 97.62 SqM | 80' garden - Off street parking | EPC rating D | Chiswick



hortonandgarton.co.uk
 Sales 020 3989 6464
 Lettings 020 3989 5454

161 Chiswick High Road, London, W4 2DT