

FOR SALE

Askew Road,
Shepherd's Bush, W12

Flat
Askew Village

£965,000 sh of fh

3  2  1 

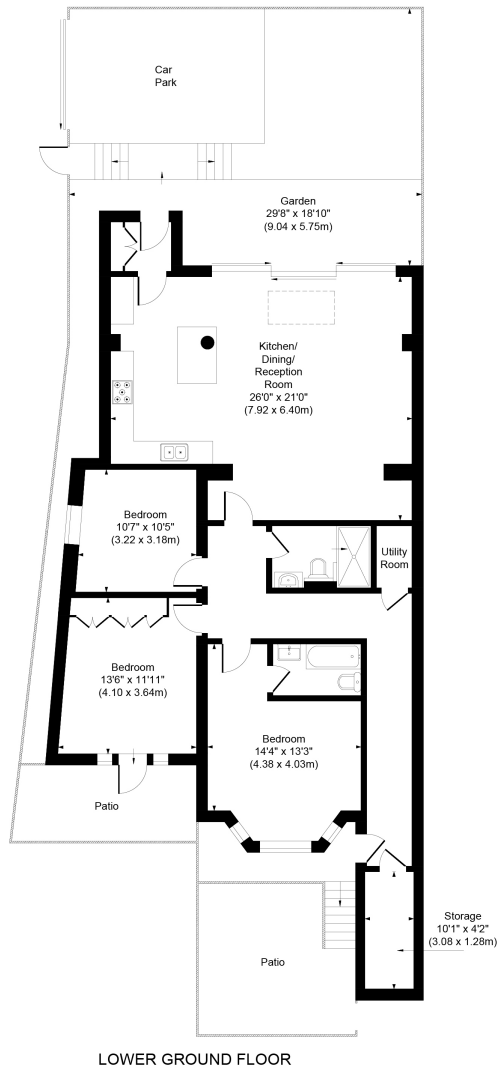


**horton
andgarton**

SALES / LETTINGS / PROPERTY MANAGEMENT

hortonandgarton.co.uk | Sales 020 8819 0510 | Lettings 020 8819 0511
172 King Street, Hammersmith, W6 0QU





ASKEW ROAD, W12
APPROXIMATE GROSS INTERNAL AREA
1346 Sq' / 125.07 SqM

Not to scale, for guidance only and must not be relied upon as a statement of fact.
All measurements and areas are approximate only

**horton
andgarton**



Victorian conversion garden flat | Three bedrooms -
Two bathrooms | 1346 Sq' - 125.07 SqM | 30' West
facing garden | EPC rating C | Askew Village



hortonandgarton.co.uk
Sales 020 8819 0510
Lettings 020 8819 0511

172 King Street, Hammersmith, W6 0QU