

FOR SALE

Waldeck Road,
Chiswick, W4

Terraced House
Strand on the Green

£1,250,000 fh

4  1  1 

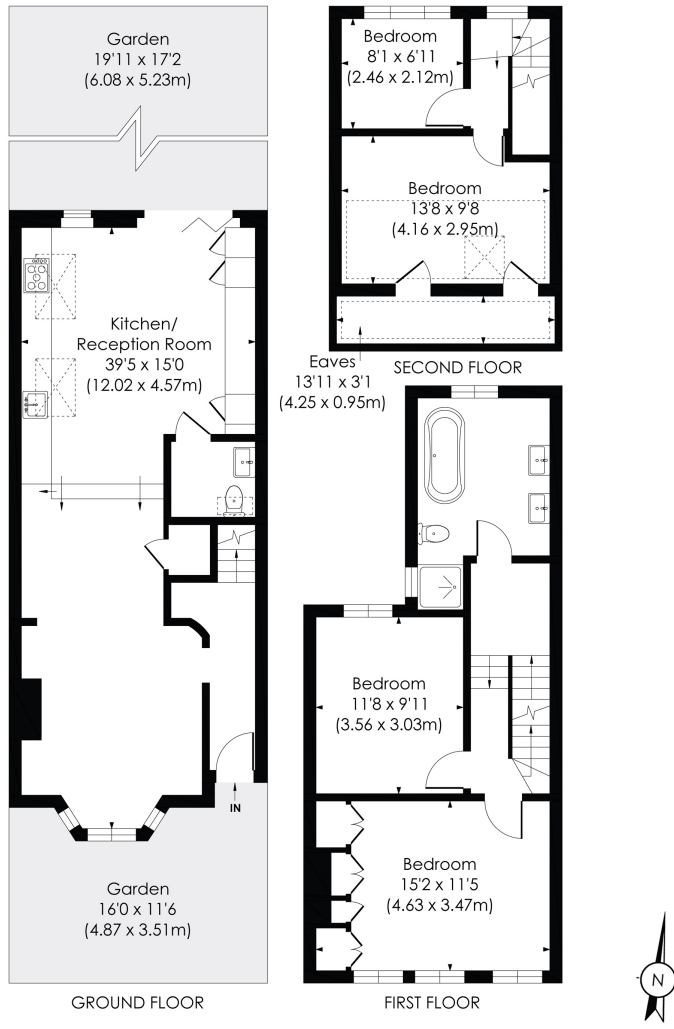


**horton
andgarton**

SALES / LETTINGS / PROPERTY MANAGEMENT

hortonandgarton.co.uk | Sales 020 3989 6464 | Lettings 020 3989 5454
161 Chiswick High Road, London, W4 2DT





WALDECK ROAD, W4

Approx. Gross Internal Floor Area
1350 Sq' / 125.43 SqM (Including Reduced Height)
1223 Sq' / 113.63 SqM (Excluding Reduced Height)

This floor plan has been prepared for the purpose of illustration only in accordance with the latest RICS code of measuring practice and is not to scale. All measurements and areas are approximate and whilst every effort has been made to ensure the accuracy of the plan contained here, no responsibility is taken for any error, omission or misstatement.



Period terraced house | Four bedrooms - One bathroom
 | 1223 Sq' - 113.63 SqM | Close to the River Thames |
 EPC rating C | Strand on the Green



hortonandgarton.co.uk
 Sales 020 3989 6464
 Lettings 020 3989 5454

161 Chiswick High Road, London, W4 2DT