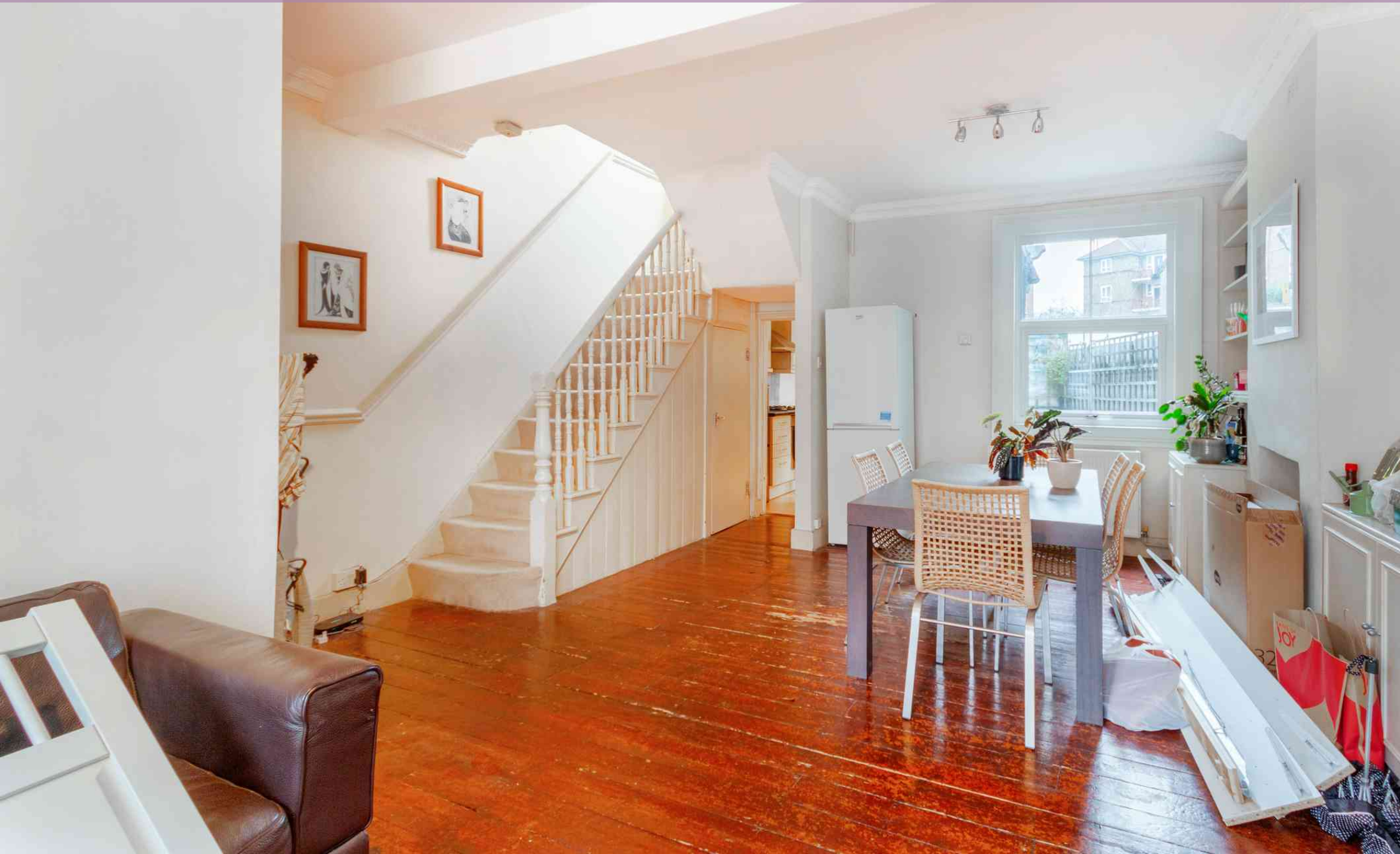


1a Claxton Grove, W6

Terraced House | 3 bedrooms |

To Let £525 p/w fh

**horton
andgarton**





Three double bedrooms | Two bathrooms | Patio courtyard | Freehold house | EPC rating D |
Hammersmith location

Our membership of the Association of Residential Letting Agents (ARLA), National Association of Estate Agents (NAEA), the National Federation of Property Professionals (NFOPP), and the Property Ombudsman Scheme - Sales and Lettings, act as a guarantee to our customers of our rigorous standards.



**horton
and garton**