

FOR SALE

Jameson Close,
Acton, W3

Terraced House
Gated development

£925,000 fh

3  2  1 



**horton
andgarton**

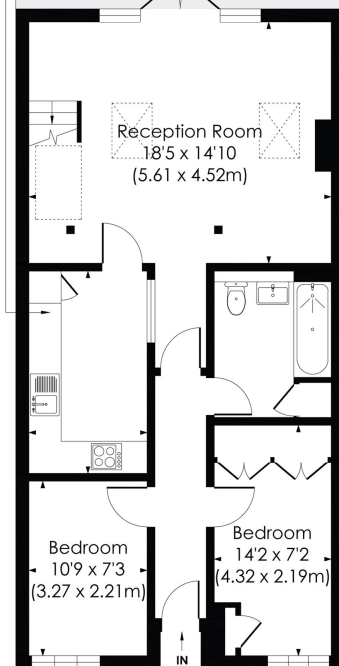
SALES / LETTINGS / PROPERTY MANAGEMENT

hortonandgarton.co.uk | Sales 020 3989 6464 | Lettings 020 3989 5454
161 Chiswick High Road, London, W4 2DT

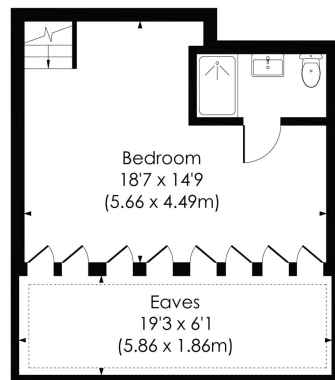


Kitchen/
Dining Room
12'4 x 7'5
(3.75 x 2.25m)

Garden
64'7 x 19'8
(19.69 x 6.00m)



GROUND FLOOR



FIRST FLOOR



JAMESON CLOSE, W3

Approx. Gross Internal Floor Area
1112 Sq' / 103.30 SqM (Including Reduced Height)
995 Sq' / 92.40 SqM (Excluding Reduced Height)

© Pixangle Property Marketing Ltd. info@pixangle.com Tel: 0208 870 2118

**horton
andgarton**

This floor plan has been prepared for the purpose of illustration only in accordance with the latest RICS code of measuring practice and is not to scale. All measurements and areas are approximate and whilst every effort has been made to ensure the accuracy of the plan contained here, no responsibility is taken for any error, omission or misstatement.



Terraced family house | Three bedrooms - Two bathrooms | 995 Sq' – 92.40 SqM | 64' South facing garden | EPC rating C | Acton



hortonandgarton.co.uk

Sales 020 3989 6464

Lettings 020 3989 5454

161 Chiswick High Road, London, W4 2DT