

# FOR SALE

---

Hamlet Gardens,  
Hammersmith, W6

---

Flat  
Ravenscourt Park

---

£700,000 fh

---

2  1  1 

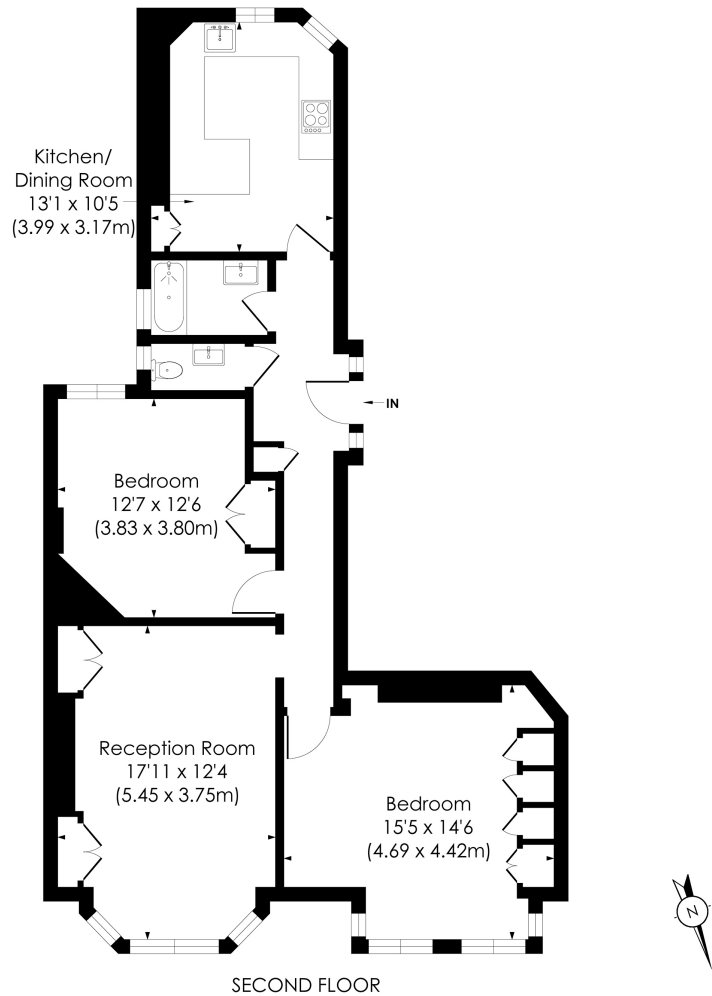


**horton  
andgarton**

SALES / LETTINGS / PROPERTY MANAGEMENT

hortonandgarton.co.uk | Sales 020 8819 0510 | Lettings 020 8819 0511  
172 King Street, Hammersmith, W6 0QU





**HAMLET GARDENS, W6**

Approx. Gross Internal Floor Area  
**859 Sq' / 79.83 SqM**



© Pixangle Property Marketing Ltd. info@pixangle.com Tel: 0208 870 2118

This floor plan has been prepared for the purpose of illustration only in accordance with the latest RICS code of measuring practice and is not to scale. All measurements and areas are approximate and whilst every effort has been made to ensure the accuracy of the plan contained here, no responsibility is taken for any error, omission or misstatement.



Victorian mansion block | Two bedrooms - One bathroom | 859 Sq' - 79.83 SqM | No chain | EPC rating C | Ravenscourt Park



hortonandgarton.co.uk  
Sales 020 8819 0510  
Lettings 020 8819 0511

172 King Street, Hammersmith, W6 0QU