

FOR SALE

Carthew Road,
Hammersmith, W6

Terraced House
Brackenbury Road

£1,750,000 fh

4  3  2 

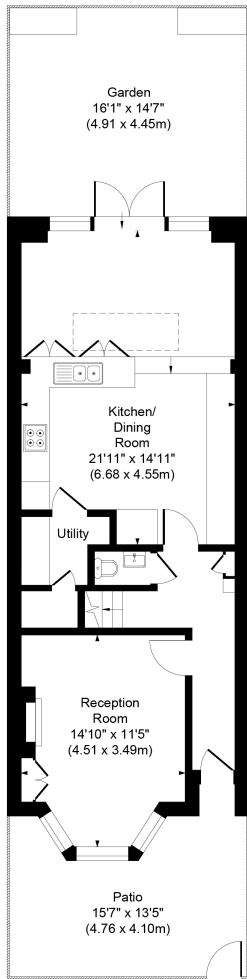


**horton
andgarton**

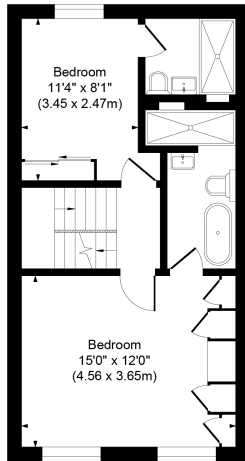
SALES / LETTINGS / PROPERTY MANAGEMENT

hortonandgarton.co.uk | Sales 020 8819 0510 | Lettings 020 8819 0511
172 King Street, Hammersmith, W6 0QU

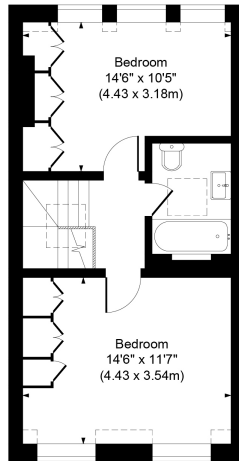




GROUND FLOOR



FIRST FLOOR



SECOND FLOOR



CARTHEW ROAD,
APPROXIMATE GROSS INTERNAL AREA
1480 Sq'/137.53 SqM

Not to scale, for guidance only and must not be relied upon as a statement of fact.
All measurements and areas are approximate only

**horton
andgarton**



Victorian terraced house | Four bedrooms - Three
bathrooms | 1480 Sq' – 137.53 SqM | West facing
garden | EPC rating C | Brackenbury Village



hortonandgarton.co.uk
Sales 020 8819 0510
Lettings 020 8819 0511

172 King Street, Hammersmith, W6 0QU