

# FOR SALE

---

Carthew Road,  
Hammersmith, W6

---

Terraced House  
Brackenbury Village

---

£1,750,000 fh

---

4  3  2 

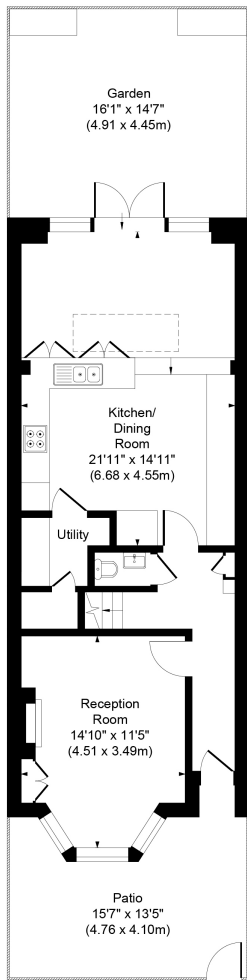


**horton  
andgarton**

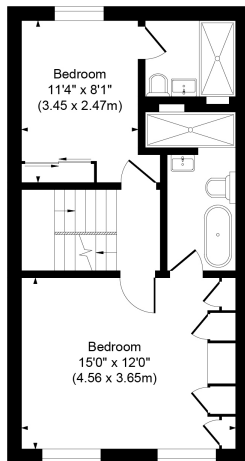
SALES / LETTINGS / PROPERTY MANAGEMENT

hortonandgarton.co.uk | Sales 020 8819 0510 | Lettings 020 8819 0511  
172 King Street, Hammersmith, W6 0QU

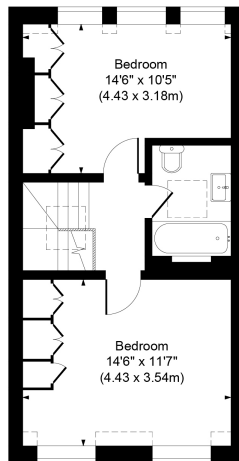




GROUND FLOOR



FIRST FLOOR



SECOND FLOOR



**CARTHEW ROAD,**  
APPROXIMATE GROSS INTERNAL AREA  
**1480 Sq'/137.53 SqM**

Not to scale, for guidance only and must not be relied upon as a statement of fact.  
All measurements and areas are approximate only

**horton  
andgarton**



Victorian terraced house | Four bedrooms - Three  
bathrooms | 1480 Sq' – 137.53 SqM | West facing  
garden | EPC rating C | Brackenbury Village



hortonandgarton.co.uk  
Sales 020 8819 0510  
Lettings 020 8819 0511

172 King Street, Hammersmith, W6 0QU