

# FOR SALE

---

Aldensley Road,  
Hammersmith, W6

---

Flat  
Brackenbury Village

---

£475,000 lh

---

1  1  1 

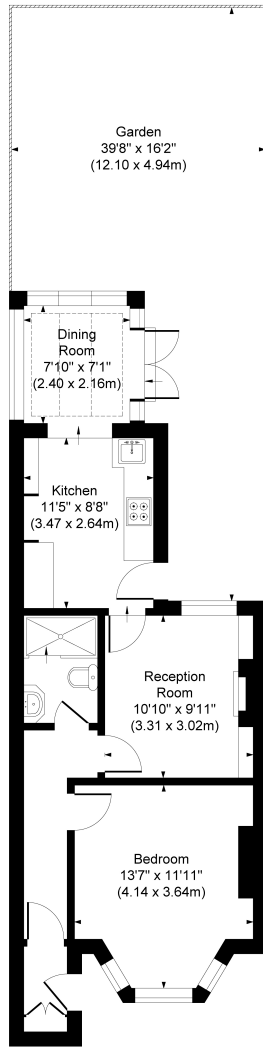


**horton  
andgarton**

SALES / LETTINGS / PROPERTY MANAGEMENT

hortonandgarton.co.uk | Sales 020 8819 0510 | Lettings 020 8819 0511  
172 King Street, Hammersmith, W6 0QU





LOWER GROUND FLOOR

**ALDENSLEY ROAD, W6**  
 APPROXIMATE GROSS INTERNAL AREA  
**536 Sq' / 49.79 SqM**

Not to scale, for guidance only and must not be relied upon as a statement of fact.  
 All measurements and areas are approximate only



Victorian garden flat | One bedroom - One bathroom |  
 536 Sq' – 49.79 SqM | 20' South-facing garden | EPC  
 rating D | Brackenbury Village



hortonandgarton.co.uk  
 Sales 020 8819 0510  
 Lettings 020 8819 0511

172 King Street, Hammersmith, W6 0QU