

# TO LET

---

Albert Terrace,  
St Peter's Conservation Area, W6

---

Semi-Detached House  
St Peter's Conservation Area

---

£2,750 pcm fh

---

2  2  2 

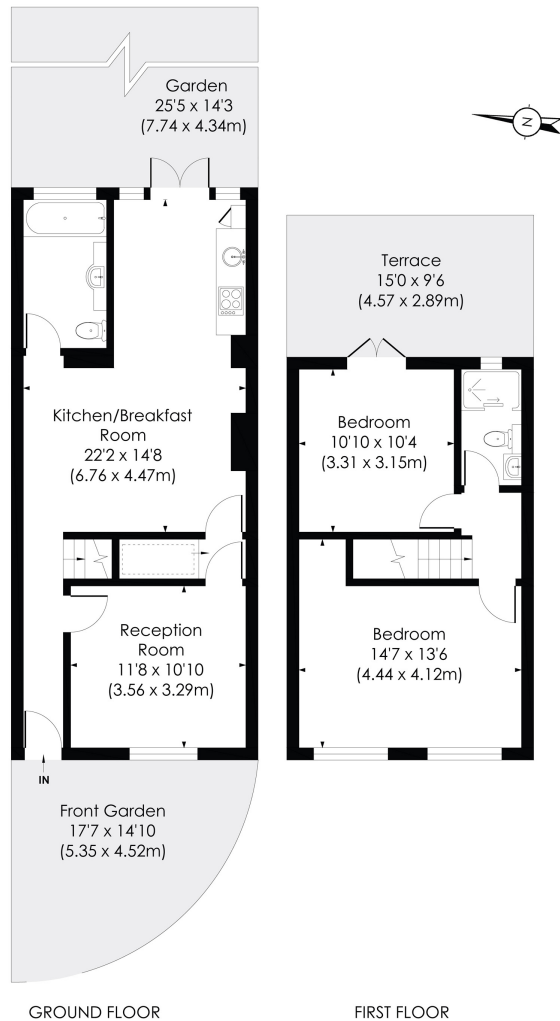


**horton  
andgarton**

SALES / LETTINGS / PROPERTY MANAGEMENT

hortonandgarton.co.uk | Sales 020 8819 0510 | Lettings 020 8819 0511  
172 King Street, Hammersmith, W6 0QU





Semi detached house | 900 - Sq' - 83.63 SqM | Two bedrooms - Two bathrooms | Two reception rooms | EPC rating D | St Peter's Conservation Area



hortonandgarton.co.uk  
 Sales 020 8819 0510  
 Lettings 020 8819 0511

172 King Street, Hammersmith, W6 0QU



© Pixangle Property Marketing Ltd. info@pixangle.com Tel: 0208 870 2118

This floor plan has been prepared for the purpose of illustration only in accordance with the latest RICS code of measuring practice and is not to scale. All measurements and areas are approximate and whilst every effort has been made to ensure the accuracy of the plan contained here, no responsibility is taken for any error, omission or misstatement.

**ALBERT TERRACE, W6**

Approx. Gross Internal Floor Area  
**900 Sq. ft/83.63 Sq. m**