

FOR SALE

Samels Court,
Hammersmith, W6

Flat
Riverside

£480,000 sh of fh

2  1  1 

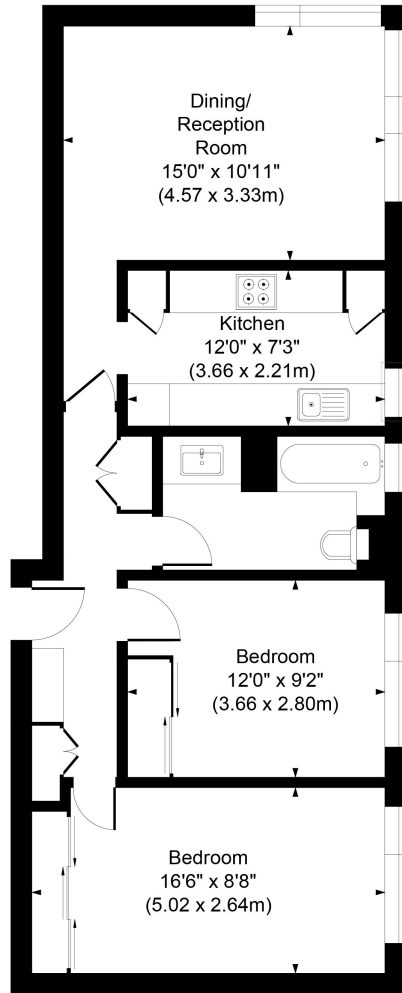


**horton
andgarton**

SALES / LETTINGS / PROPERTY MANAGEMENT

hortonandgarton.co.uk | Sales 020 8819 0510 | Lettings 020 8819 0511
172 King Street, Hammersmith, W6 0QU





THIRD FLOOR



(NOT SHOWN IN ACTUAL LOCATION/ORIENTATION)



SAMELS COURT,
APPROXIMATE GROSS INTERNAL AREA
690 Sq'/64.11 SqM

Not to scale, for guidance only and must not be relied upon as a statement of fact.
All measurements and areas are approximate only



Private gated riverside development | Two bedrooms -
One bathroom | 690 Sq' - 64.11 SqM | Allocated off-
street parking | EPC rating D | Riverside



hortonandgarton.co.uk
Sales 020 8819 0510
Lettings 020 8819 0511

172 King Street, Hammersmith, W6 0QU