

# FOR SALE

---

Rosedale Terrace,  
Hammersmith, W6

---

Maisonette  
Brackenbury Village

---

£950,000 fh

---

3  1  1 

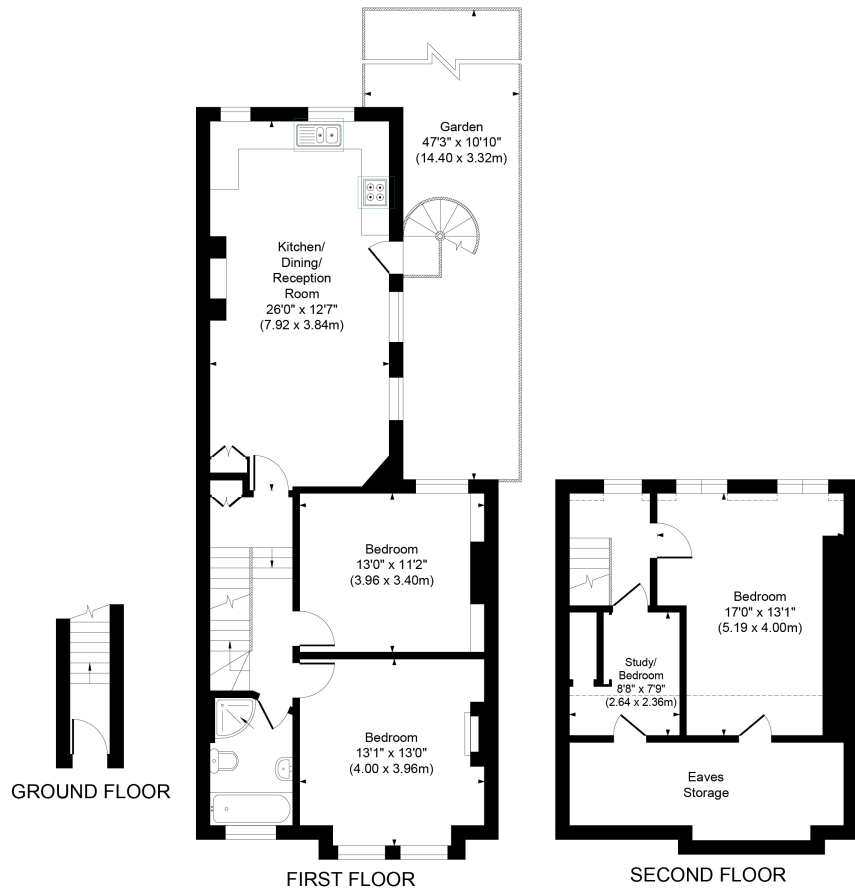


**horton  
andgarton**

SALES / LETTINGS / PROPERTY MANAGEMENT

hortonandgarton.co.uk | Sales 020 8819 0510 | Lettings 020 8819 0511  
172 King Street, Hammersmith, W6 0QU





GROUND FLOOR

FIRST FLOOR

SECOND FLOOR



**ROSEDALE TERRACE, W6**

APPROXIMATE GROSS INTERNAL AREA

**1155 Sq'/107.35 SqM**

APPROXIMATE EAVES STORAGE AREA

**121 Sq'/ 11.27 SqM**

APPROXIMATE TOTAL AREA

**1276 Sq'/ 118.62 SqM**

Not to scale, for guidance only and must not be relied upon as a statement of fact.  
All measurements and areas are approximate only

**horton  
and garton**



Split-level maisonette | Three bedrooms - One bathroom  
| 1155 Sq' – 107.35 SqM | Private garden | EPC rating D |  
Brackenbury Village



hortonandgarton.co.uk

Sales 020 8819 0510

Lettings 020 8819 0511

172 King Street, Hammersmith, W6 0QU