

FOR SALE

Boot Court Jeddo Road,
Shepherd's Bush, W12

Flat
Wendell Park

£665,000 lh

2  2  1 

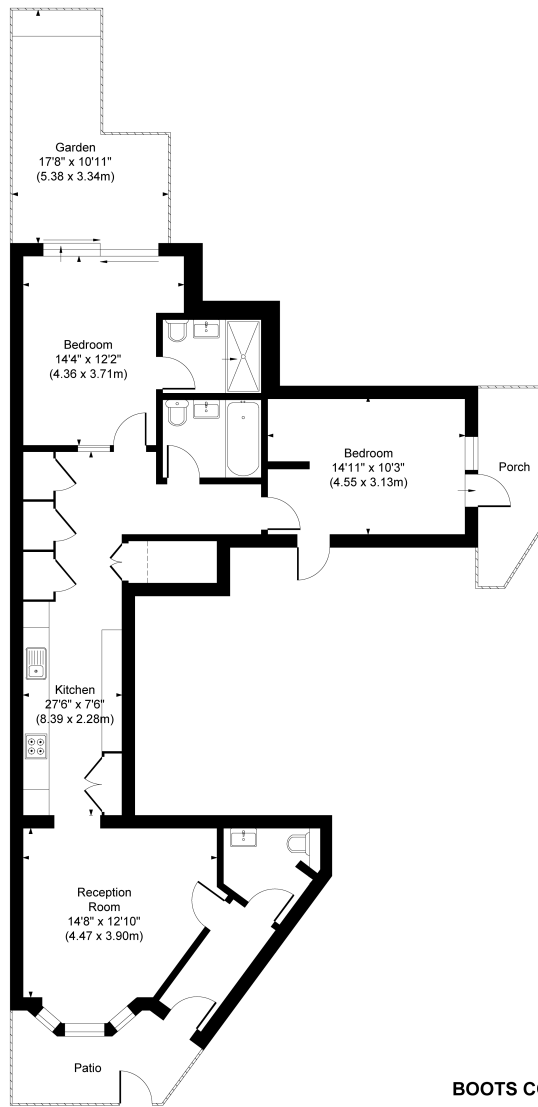


**horton
andgarton**

SALES / LETTINGS / PROPERTY MANAGEMENT

hortonandgarton.co.uk | Sales 020 8819 0510 | Lettings 020 8819 0511
172 King Street, Hammersmith, W6 0QU





GROUND FLOOR



BOOTS COURT, W12
 APPROXIMATE GROSS INTERNAL AREA
974 Sq' / 90.49 SqM

Not to scale, for guidance only and must not be relied upon as a statement of fact.
 All measurements and areas are approximate only

**horton
andgarton**



Ground floor purpose built flat | Two bedrooms - Two bathrooms | 974 Sq' - 90.49 SqM | Landscaped garden | EPC rating C | Wendell Park



hortonandgarton.co.uk
 Sales 020 8819 0510
 Lettings 020 8819 0511

172 King Street, Hammersmith, W6 0QU