

FOR SALE

Carthew Road,
Hammersmith, W6

Terraced House
Brackenbury Village

£1,250,000 fh

3  1  1 

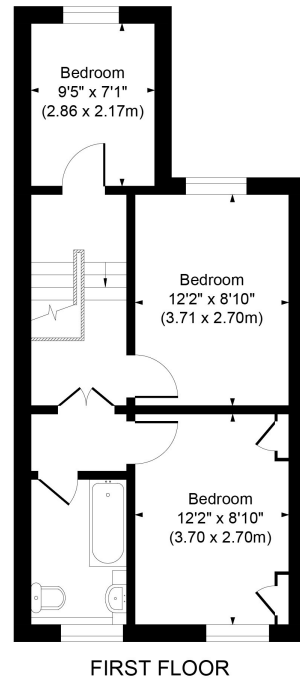
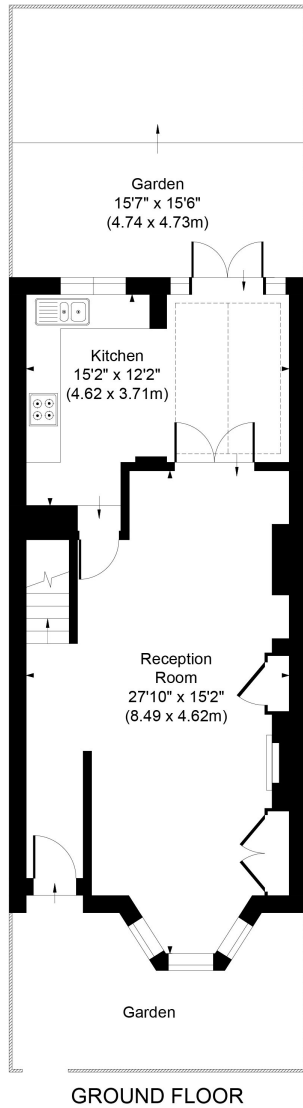


**horton
andgarton**

SALES / LETTINGS / PROPERTY MANAGEMENT

hortonandgarton.co.uk | Sales 020 8819 0510 | Lettings 020 8819 0511
172 King Street, Hammersmith, W6 0QU





CARTHEW ROAD,
 APPROXIMATE GROSS INTERNAL AREA
977 Sq' / 90.81 SqM

Not to scale, for guidance only and must not be relied upon as a statement of fact.
 All measurements and areas are approximate only

**horton
andgarton**



Victorian terraced house | Three bedrooms - One bathroom | 977 Sq' - 90.81 SqM | West facing garden | EPC rating E | Brackenbury Village



hortonandgarton.co.uk
 Sales 020 8819 0510
 Lettings 020 8819 0511

172 King Street, Hammersmith, W6 0QU