

FOR SALE

Carthew Road,
Hammersmith, W6

Terraced House
Brackenbury Village

£1,150,000 fh

3  1  1 

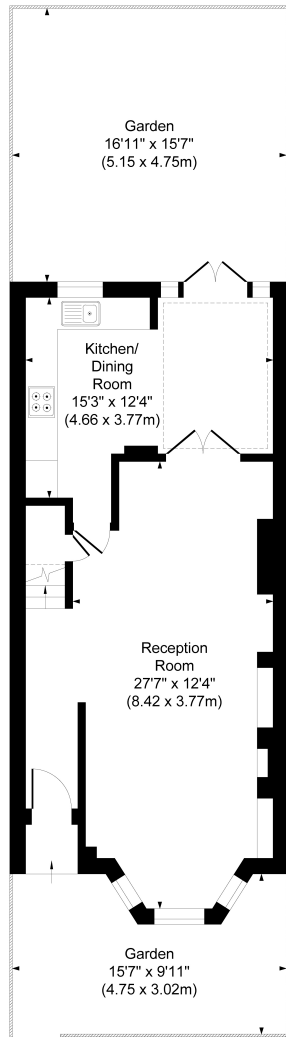


**horton
andgarton**

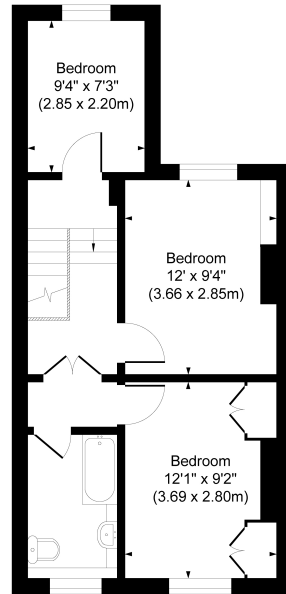
SALES / LETTINGS / PROPERTY MANAGEMENT

hortonandgarton.co.uk | Sales 020 8819 0510 | Lettings 020 8819 0511
172 King Street, Hammersmith, W6 0QU





GROUND FLOOR



FIRST FLOOR



CARTHEW ROAD, W6
APPROXIMATE GROSS INTERNAL AREA
986 Sq' / 91.60 SqM

Not to scale, for guidance only and must not be relied upon as a statement of fact.
All measurements and areas are approximate only

**horton
andgarton**



Victorian terraced house | Three bedrooms - One bathroom | 986 Sq' - 91.60 SqM | West facing garden | EPC rating E | Brackenbury Village



hortonandgarton.co.uk
Sales 020 8819 0510
Lettings 020 8819 0511

172 King Street, Hammersmith, W6 0QU