

FOR SALE

Westville Road,
Shepherd's Bush, W12

Terraced House
Askew Village

£900,000 fh

3  1  2 

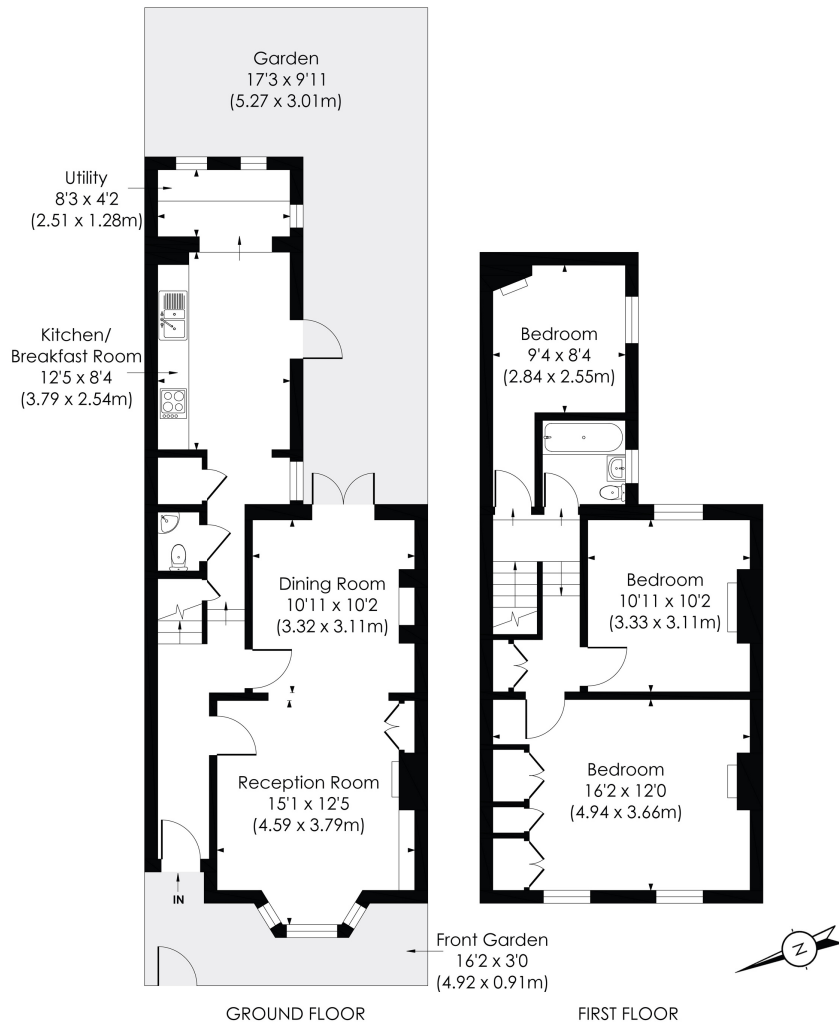


**horton
andgarton**

SALES / LETTINGS / PROPERTY MANAGEMENT

hortonandgarton.co.uk | Sales 020 8819 0510 | Lettings 020 8819 0511
172 King Street, Hammersmith, W6 0QU





WESTVILLE ROAD, W12

Approx. Gross Internal Floor Area
1081 Sq'/100.4 SqM



This floor plan has been prepared for the purpose of illustration only in accordance with the latest RICS code of measuring practice and is not to scale. All measurements and areas are approximate and whilst every effort has been made to ensure the accuracy of the plan contained here, no responsibility is taken for any error, omission or misstatement.



Victorian family house | Three bedrooms - One bathroom | 1081 Sq' - 100.4 SqM | Superbly presented | EPC rating D | Askew Village



hortonandgarton.co.uk
 Sales 020 8819 0510
 Lettings 020 8819 0511

172 King Street, Hammersmith, W6 0QU