

TO LET

St Peter's Grove,
St Peter's Conservation Area ,

Terraced House
EPC rating C

£3,700 pcm

3  2  1 



**horton
andgarton**

SALES / LETTINGS / PROPERTY MANAGEMENT

hortonandgarton.co.uk | Sales 020 8819 0510 | Lettings 020 8819 0511
172 King Street, Hammersmith, W6 0QU



TO LET

St Peter's Grove,
St Peter's Conservation Area ,

Terraced House
EPC rating C

£3,700 pcm

3  2  1 



**horton
andgarton**

SALES / LETTINGS / PROPERTY MANAGEMENT

hortonandgarton.co.uk | Sales 020 8819 0510 | Lettings 020 8819 0511
172 King Street, Hammersmith, W6 0QU



TO LET

St Peter's Grove,
St Peter's Conservation Area ,

Terraced House
EPC rating C

£3,700 pcm

3  2  1 

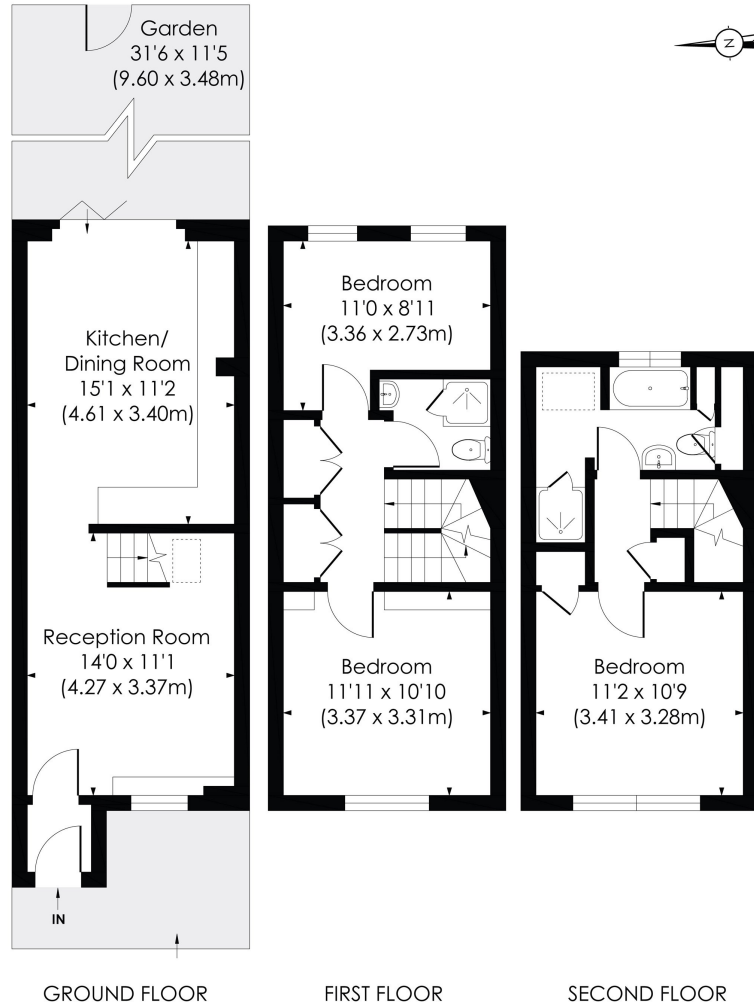


horton andgarton

SALES / LETTINGS / PROPERTY MANAGEMENT

hortonandgarton.co.uk | Sales 020 8819 0510 | Lettings 020 8819 0511
172 King Street, Hammersmith, W6 0QU





ST PETER'S GROVE, W6

Approx. Gross Internal Floor Area
920 Sq' / 85.44 SqM



© Pixangle Property Marketing Ltd. info@pixangle.com Tel: 0208 870 2118

This floor plan has been prepared for the purpose of illustration only in accordance with the latest RICS code of measuring practice and is not to scale. All measurements and areas are approximate and whilst every effort has been made to ensure the accuracy of the plan contained here, no responsibility is taken for any error, omission or misstatement.



Recently redecorated | Three double bedrooms | Two bathrooms | Courtyard Garden | EPC rating C | St Peter's Conservation area



hortonandgarton.co.uk
 Sales 020 8819 0510
 Lettings 020 8819 0511

172 King Street, Hammersmith, W6 0QU