

# TO LET

---

Bradmore Park Road,  
Brackbury Village, W6

---

Maisonette  
Brackbury Village

---

£2,400 pcm

---

2  2  1 

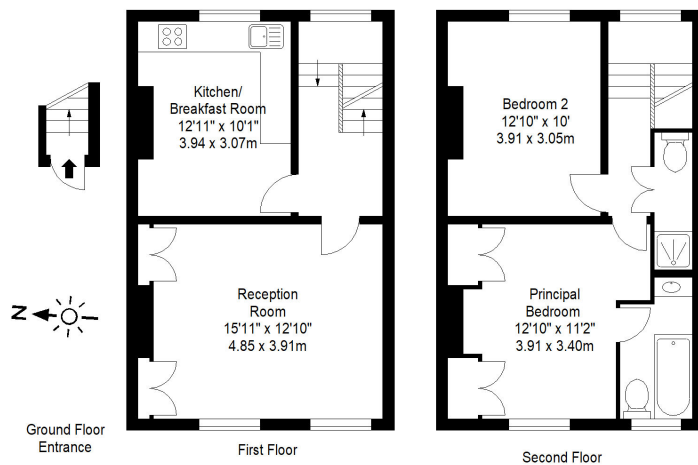


**horton  
andgarton**

SALES / LETTINGS / PROPERTY MANAGEMENT

hortonandgarton.co.uk | Sales 020 8819 0510 | Lettings 020 8819 0511  
172 King Street, Hammersmith, W6 0QU





**horton  
and garton**

Bradmore Park Road, W6  
Gross Internal Area 830 sq ft - 77.11 sqm

Drawn from supplied plans. All measurements are approximate.  
This floor plan is for illustrative purposes only and is not to scale.  
© Horton and Garton Estate Agents 2022



Split level maisonette | Two bedrooms | Unfurnished |  
Two bathrooms | EPC rating C | Brackenbury Village



hortonandgarton.co.uk  
Sales 020 8819 0510  
Lettings 020 8819 0511

172 King Street, Hammersmith, W6 0QU