

# FOR SALE

---

Southfield Road,  
Bedford Park borders, W4

---

Flat  
Bedford Park borders

---

£750,000 sh of fh

---

3  2  1 

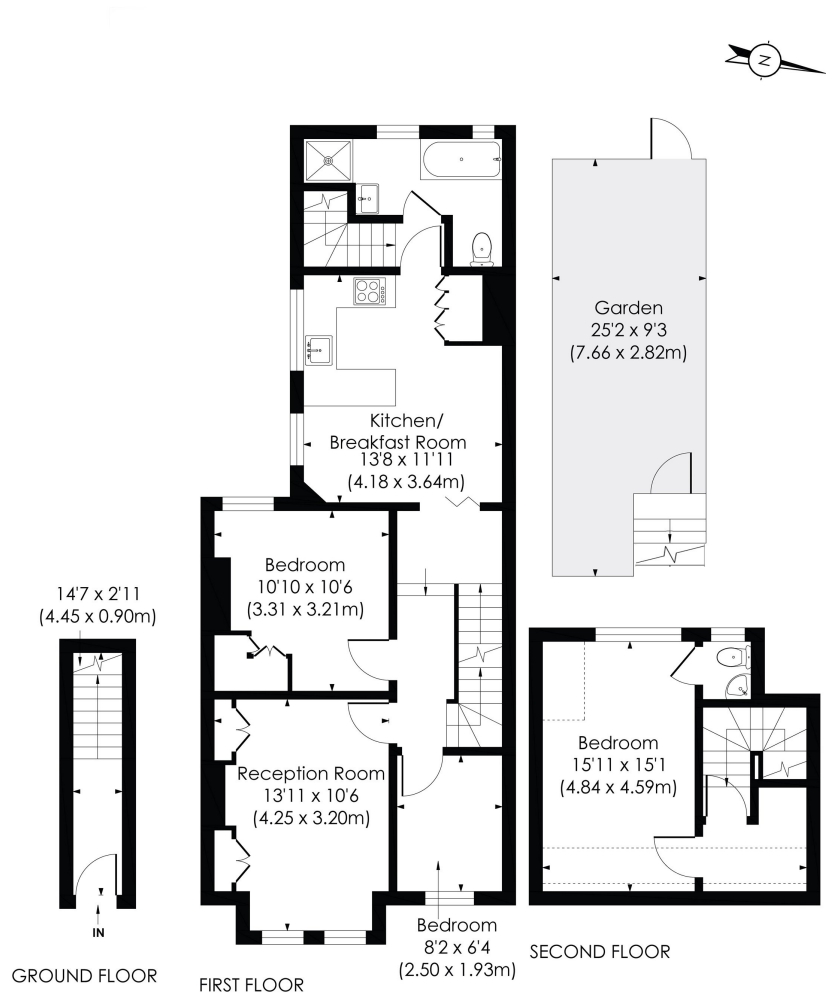


**horton  
andgarton**

SALES / LETTINGS / PROPERTY MANAGEMENT

hortonandgarton.co.uk | Sales 020 3989 6464 | Lettings 020 3989 5454  
161 Chiswick High Road, London, W4 2DT





**SOUTHFIELD ROAD, W4**

Approx. Gross Internal Floor Area  
**993 Sq' / 92.23 SqM** (Including RHH)  
**938 Sq' / 87.18 SqM** (Excluding RHH)



© Pixangle Property Marketing Ltd. info@pixangle.com Tel: 0208 870 2118

This floor plan has been prepared for the purpose of illustration only in accordance with the latest RICS code of measuring practice and is not to scale. All measurements and areas are approximate and whilst every effort has been made to ensure the accuracy of the plan contained here, no responsibility is taken for any error, omission or misstatement.



Edwardian split level maisonette | Three bedrooms -  
 Two bathrooms | 938 Sq' - 87.18 SqM | 25' West facing  
 garden | EPC rating D | Bedford Park borders



hortonandgarton.co.uk  
 Sales 020 3989 6464  
 Lettings 020 3989 5454

161 Chiswick High Road, London, W4 2DT