

# FOR SALE

---

Leamore Street,  
Hammersmith, W6

---

Terraced House  
West London

---

£1,275,000 fh

---

4  2  1 

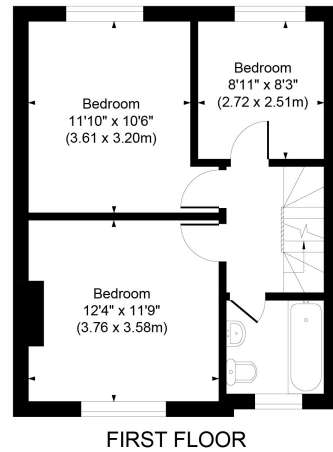
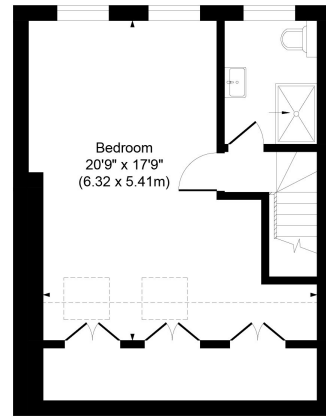
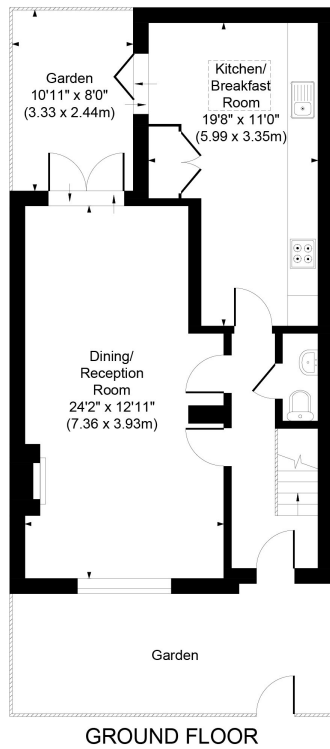


**horton  
andgarton**

SALES / LETTINGS / PROPERTY MANAGEMENT

hortonandgarton.co.uk | Sales 020 8819 0510 | Lettings 020 8819 0511  
172 King Street, Hammersmith, W6 0QU





**LEAMORE STREET,**  
APPROXIMATE GROSS INTERNAL AREA  
**1515 Sq' / 140.72 SqM**

Not to scale, for guidance only and must not be relied upon as a statement of fact.  
All measurements and areas are approximate only

**horton  
and garton**



Victorian family home | Four bedrooms - Two bathrooms  
| 1515 Sq' - 140.72 SqM | Superbly presented  
throughout | EPC rating C | Hammersmith



hortonandgarton.co.uk  
Sales 020 8819 0510  
Lettings 020 8819 0511

172 King Street, Hammersmith, W6 0QU