

FOR SALE

Glenthorne Road,
Hammersmith, W6

Flat
West London

£525,000 sh of fh

1  1  1 

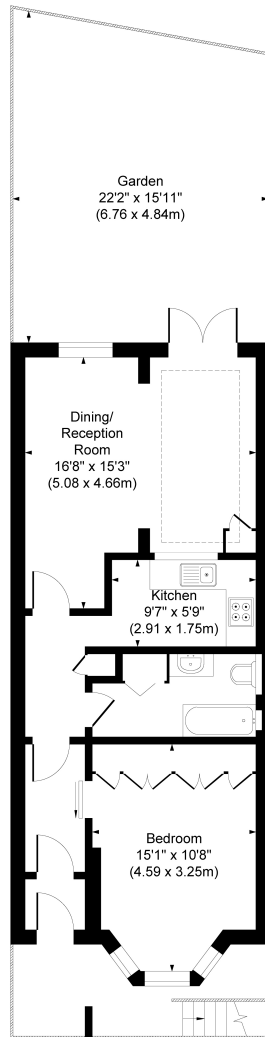


**horton
andgarton**

SALES / LETTINGS / PROPERTY MANAGEMENT

hortonandgarton.co.uk | Sales 020 8819 0510 | Lettings 020 8819 0511
172 King Street, Hammersmith, W6 0QU





LOWER GROUND FLOOR

**horton
andgarton**



GLENTHORNE ROAD, W6
APPROXIMATE GROSS INTERNAL AREA
596 Sq' / 55.36 SqM

Not to scale, for guidance only and must not be relied upon as a statement of fact.
All measurements and areas are approximate only



Victorian garden flat | One bedroom - One bathroom |
596 Sq' – 55.36 SqM | 22' garden | EPC rating C |
Hammersmith



hortonandgarton.co.uk
Sales 020 8819 0510
Lettings 020 8819 0511

172 King Street, Hammersmith, W6 0QU