

FOR SALE

Bloemfontein Avenue,
Shepherd's Bush, W12

Terraced House
West London

£1,375,000 fh

3  2  2 

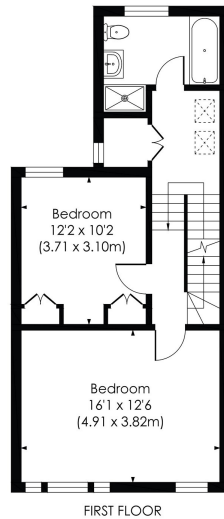
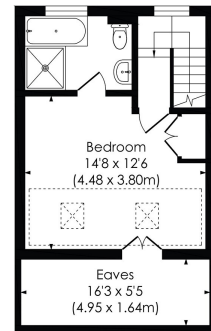
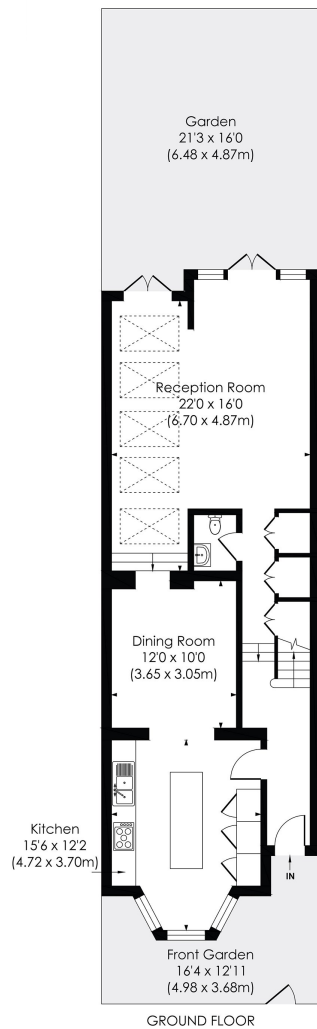


**horton
andgarton**

SALES / LETTINGS / PROPERTY MANAGEMENT

hortonandgarton.co.uk | Sales 020 8819 0510 | Lettings 020 8819 0511
172 King Street, Hammersmith, W6 0QU





BLOEMFONTEIN AVENUE, W12

Approx. Gross Internal Floor Area
1597 Sq' / 148.33 SqM (excl. eaves)
1684 Sq' / 156.45 SqM (incl. eaves)

© Pixangle Property Marketing Ltd. info@pixangle.com Tel: 0208 870 2118

This floor plan has been prepared for the purpose of illustration only in accordance with the latest RICS code of measuring practice and is not to scale. All measurements and areas are approximate and whilst every effort has been made to ensure the accuracy of the plan contained here, no responsibility is taken for any error, omission or misstatement.



Victorian family home | Three bedrooms - Two bathrooms | 1597 Sq' - 148.36 SqM | Stylish decor | EPC rating C | Shepherd's Bush



hortonandgarton.co.uk
 Sales 020 8819 0510
 Lettings 020 8819 0511

172 King Street, Hammersmith, W6 0QU