

FOR SALE

Keith Grove,
Shepherd's Bush, W12

Terraced House
West London

£1,250,000 fh

4  2  2 

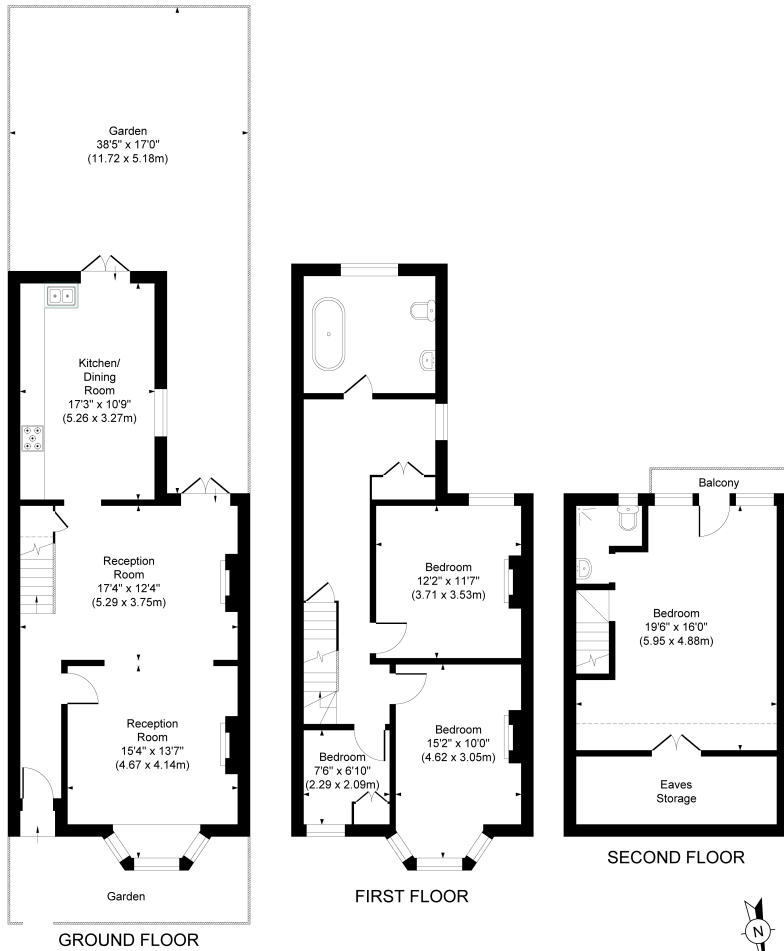


**horton
andgarton**

SALES / LETTINGS / PROPERTY MANAGEMENT

hortonandgarton.co.uk | Sales 020 8819 0510 | Lettings 020 8819 0511
172 King Street, Hammersmith, W6 0QU





**horton
andgarton**

KEITH GROVE, W12
 APPROXIMATE GROSS INTERNAL AREA
1609 Sq'/149.50 SqM
 APPROXIMATE EAVES STORAGE AREA
86 Sq'/8.05 SqM
 APPROXIMATE TOTAL AREA
1695 Sq'/157.55 SqM

Not to scale, for guidance only and must not be relied upon as a statement of fact.
 All measurements and areas are approximate only



Victorian terrace house | Four bedrooms - Two bathrooms | 1609 Sq' - 149.50 SqM | South facing garden | EPC rating E | Shepherd's Bush



hortonandgarton.co.uk
 Sales 020 8819 0510
 Lettings 020 8819 0511

172 King Street, Hammersmith, W6 0QU