

FOR SALE

St Elmo Road,
Shepherd's Bush , W12

Maisonette
Askew Village

£685,000 sh of fh

2  1  1 

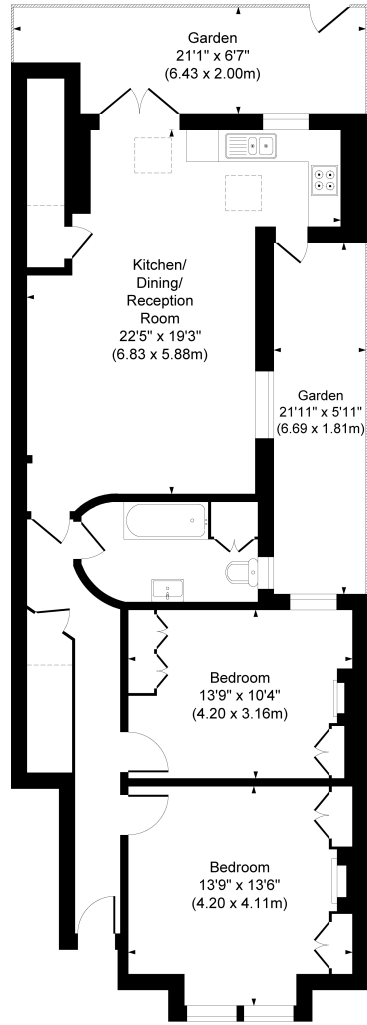


**horton
andgarton**

SALES / LETTINGS / PROPERTY MANAGEMENT

hortonandgarton.co.uk | Sales 020 8819 0510 | Lettings 020 8819 0511
172 King Street, Hammersmith, W6 0QU





GROUND FLOOR

ST ELMO ROAD, W12

APPROXIMATE GROSS INTERNAL AREA

872 Sq' / 80.99 SqM

Not to scale, for guidance only and must not be relied upon as a statement of fact.
All measurements and areas are approximate only

**horton
andgarton**



Edwardian maisonette | Two bedrooms - One bathroom
| 872 Sq' - 80.99 SqM | No chain | EPC rating D | Askew
Village



hortonandgarton.co.uk
Sales 020 8819 0510
Lettings 020 8819 0511

172 King Street, Hammersmith, W6 0QU