

# FOR SALE

---

Boscombe Road,  
Shepherd's Bush, W12

---

Flat  
West London

---

£650,000 sh of fh

---

3  2  1 

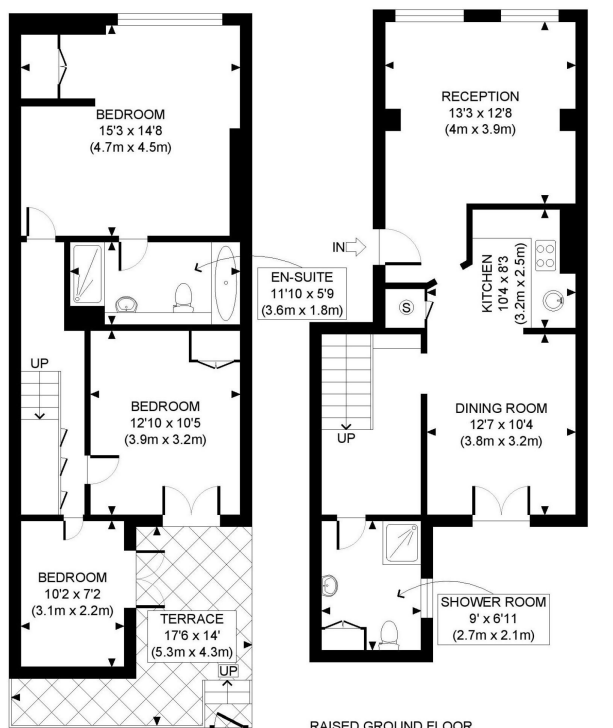


**horton  
andgarton**

SALES / LETTINGS / PROPERTY MANAGEMENT

hortonandgarton.co.uk | Sales 020 8819 0510 | Lettings 020 8819 0511  
172 King Street, Hammersmith, W6 0QU





RAISED GROUND FLOOR  
GROSS INTERNAL  
FLOOR AREA 576 SQ FT

LOWER GROUND FLOOR  
GROSS INTERNAL  
FLOOR AREA 596 SQ FT

APPROX. GROSS INTERNAL FLOOR AREA: 1172 SQ FT/ 109 SQM

**horton  
andgarton**

This plan is for illustrative purposes only and should be used as such by any prospective client. Whilst every attempt has been made to ensure the accuracy of the Floor Plan contained here, measurements of the doors, windows, rooms and any other items are approximate and no responsibility is taken for any errors, omissions, or misstatement. The services, systems and appliances shown have not been tested and no guarantee as to the operability or efficiency can be given.



Split level maisonette | Three bedrooms - Two bathrooms | 1172 Sq' - 109 SqM | Private patio garden | EPC rating D | Shepherd's Bush



hortonandgarton.co.uk  
Sales 020 8819 0510  
Lettings 020 8819 0511

172 King Street, Hammersmith, W6 0QU